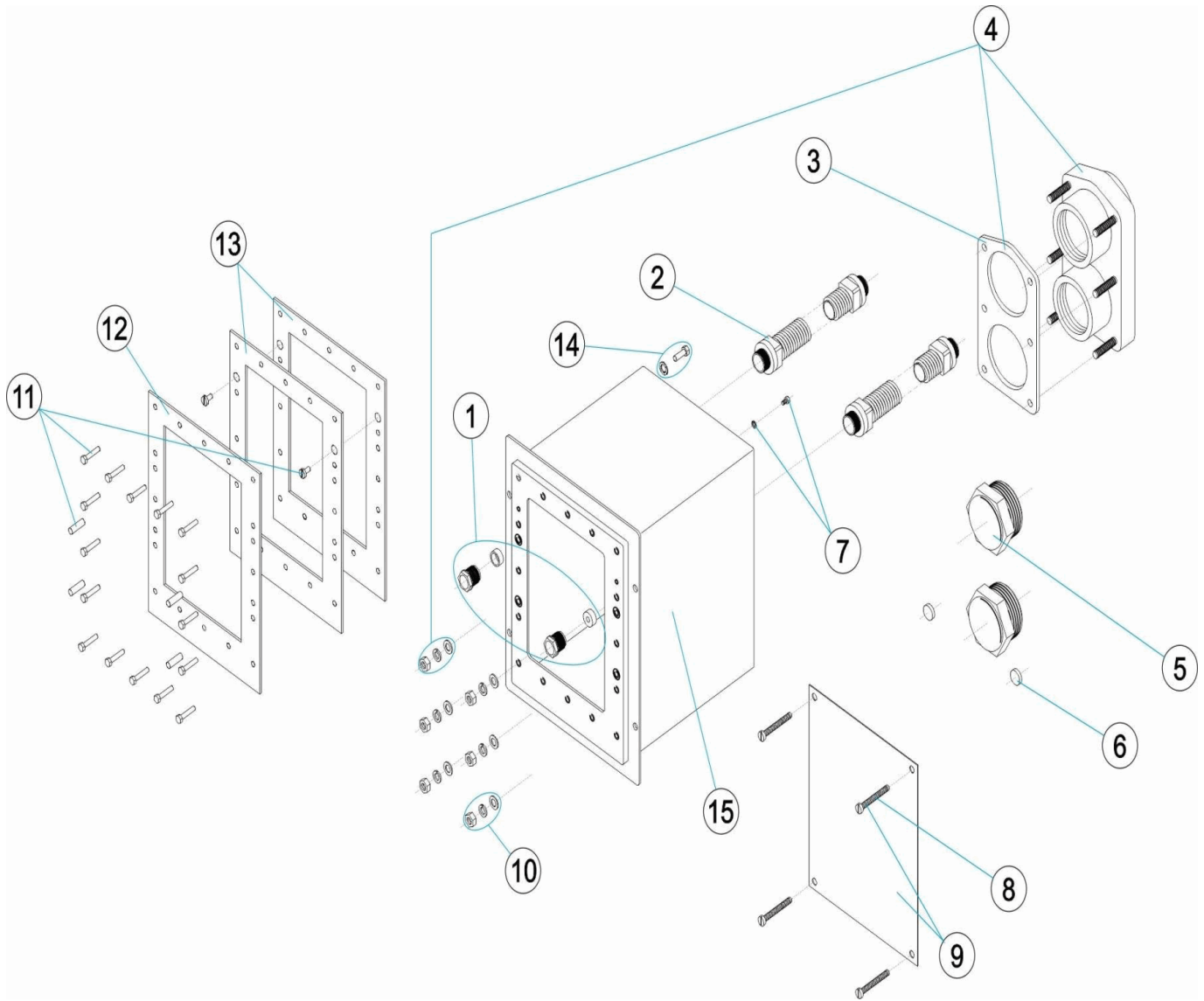


CODIGO **00243, 00248**

DESCRIPCION: **CAJA ALOJAMIENTO ECC INOX**



ESPAÑOL

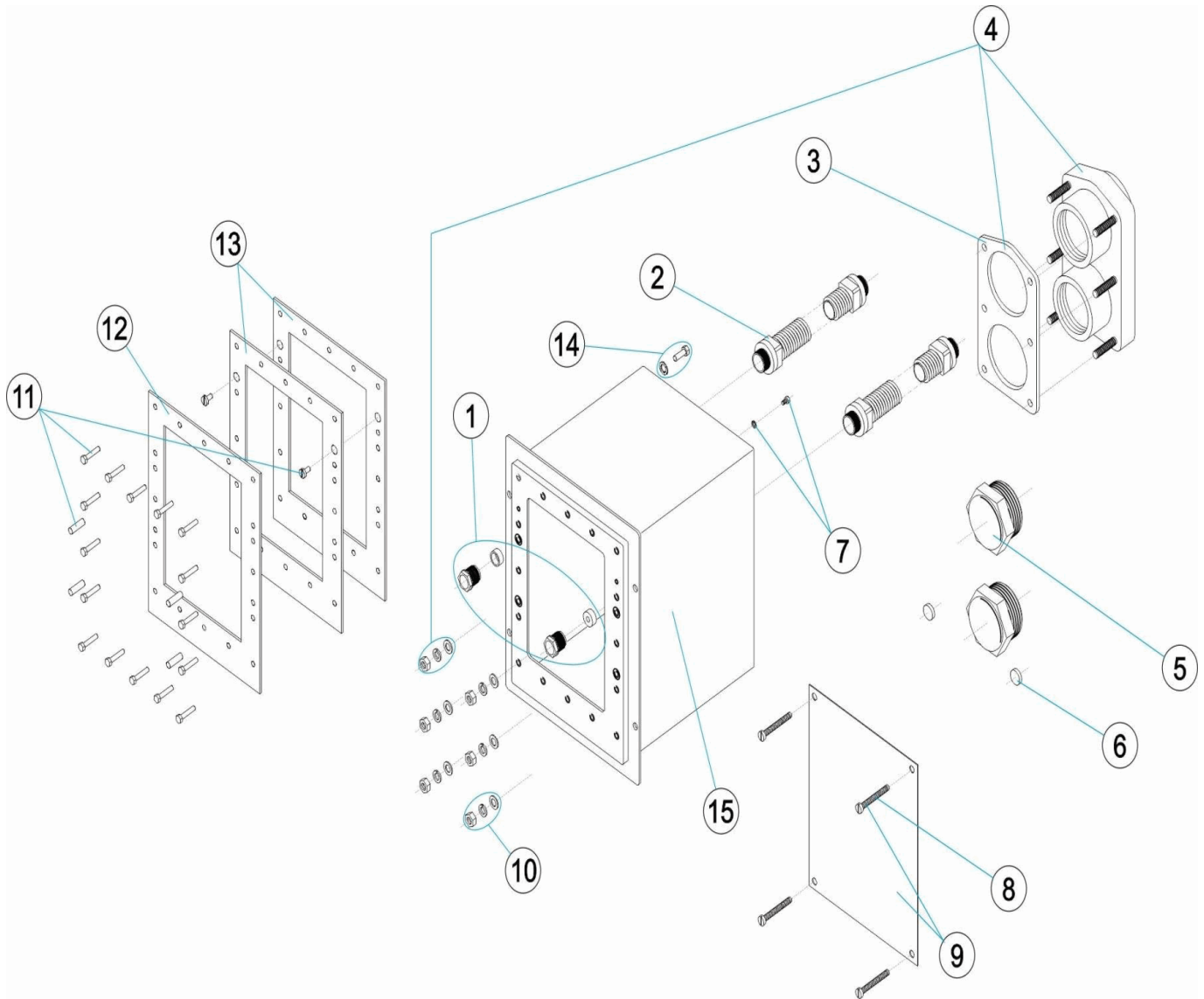
POS	CODIGO	DESCRIPCION	POS	CODIGO	DESCRIPCION
1	4402050110	PRENSAESTOPAS E.C.C.	9	4402050030	TAPA CAJA INOX + TORNILLOS
2	4402050029	MANGUERA PASACABLES	10	4402050025	TORNILLERIA BRIDA
3	4402050108	JUNTA TAPA E.C.C.	11	4402050115	TORNILLERIA MARCO INOX.
4	4402050107	BRIDA CONEXIÓN CON JUNTA	12	* 4402050504	MARCO INOX
5	4402050027	TAPON ROSCA MACHO 2"	13	* 4402011407	JUNTA MARCO INOX.
6	4402050028	JUNTA CIEGA	14	* 4401090402	TOMA DE TIERRA
7	4401090402	TOMA DE TIERRA	15	00243R0100	CUERPO CAJA INOX
8	4402050026	BOLSA TORNILLOS			

CODIGO **00243, 00248**DESCRIPCION: **CAJA ALOJAMIENTO ECC INOX****OBSERVACIONES**

POS	CODIGO	OBSERVACIONES
12	4402050504	LINER
13	4402011407	LINER
14	4401090402	LINER

CODE **00243, 00248**

DESCRIPTION: **PIECE A SCELLER ECC INOX**



FRANCAIS

POS	CODE	DESCRIPTION	POS	CODE	DESCRIPTION
1	4402050110	PRESSE ETOUPE	9	4402050030	TÔLE COFFRAGE + VIS
2	4402050029	PASSE-CÂBLE	10	4402050025	VIS FLASQUE
3	4402050108	JOINT DE CONNEXION	11	4402050115	VIS FACADE INOX
4	4402050107	BRIDE DE CONNEXION AVEC JOINT	12	* 4402050504	CADRE INOX
5	4402050027	BOUCHON VISSÉ MÂLE 2"	13	* 4402011407	JOINT FACADE CARREE INOX
6	4402050028	JOINT AVEUGLE	14	* 4401090402	PRISE DE TERRE
7	4401090402	PRISE DE TERRE	15	00243R0100	CADRE PLASTIQUE
8	4402050026	SACHET VISSERIE			

CODE **00243, 00248**

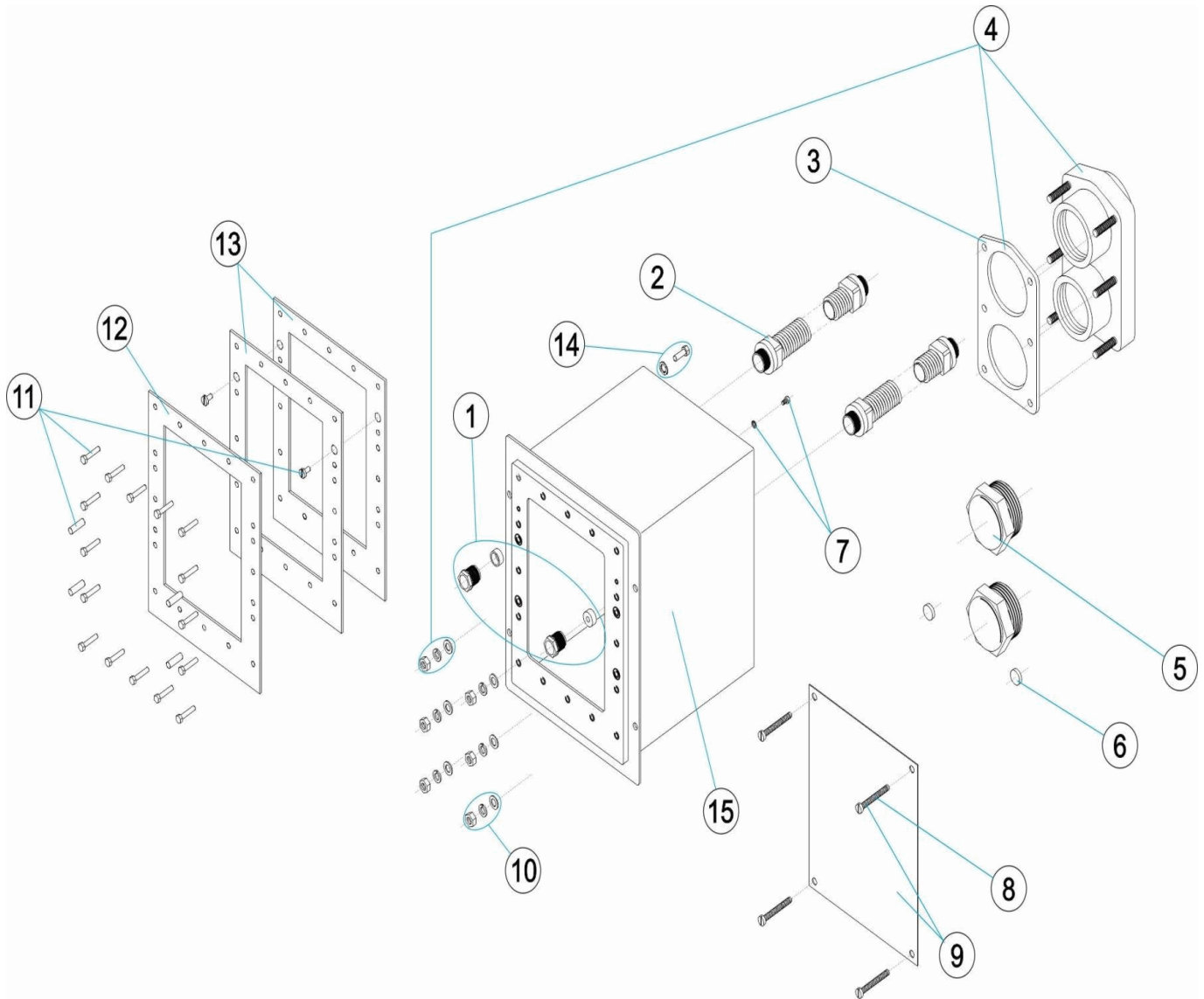
DESCRIPTION: **PIECE A SCELLER ECC INOX**

OBSERVATIONS

POS	CODE	OBSERVATIONS
12	4402050504	LINER
13	4402011407	LINER
14	4401090402	LINER

CODE **00243, 00248**

DESCRIPTION: **ECC S.S. HOUSING CASE**



ENGLISH

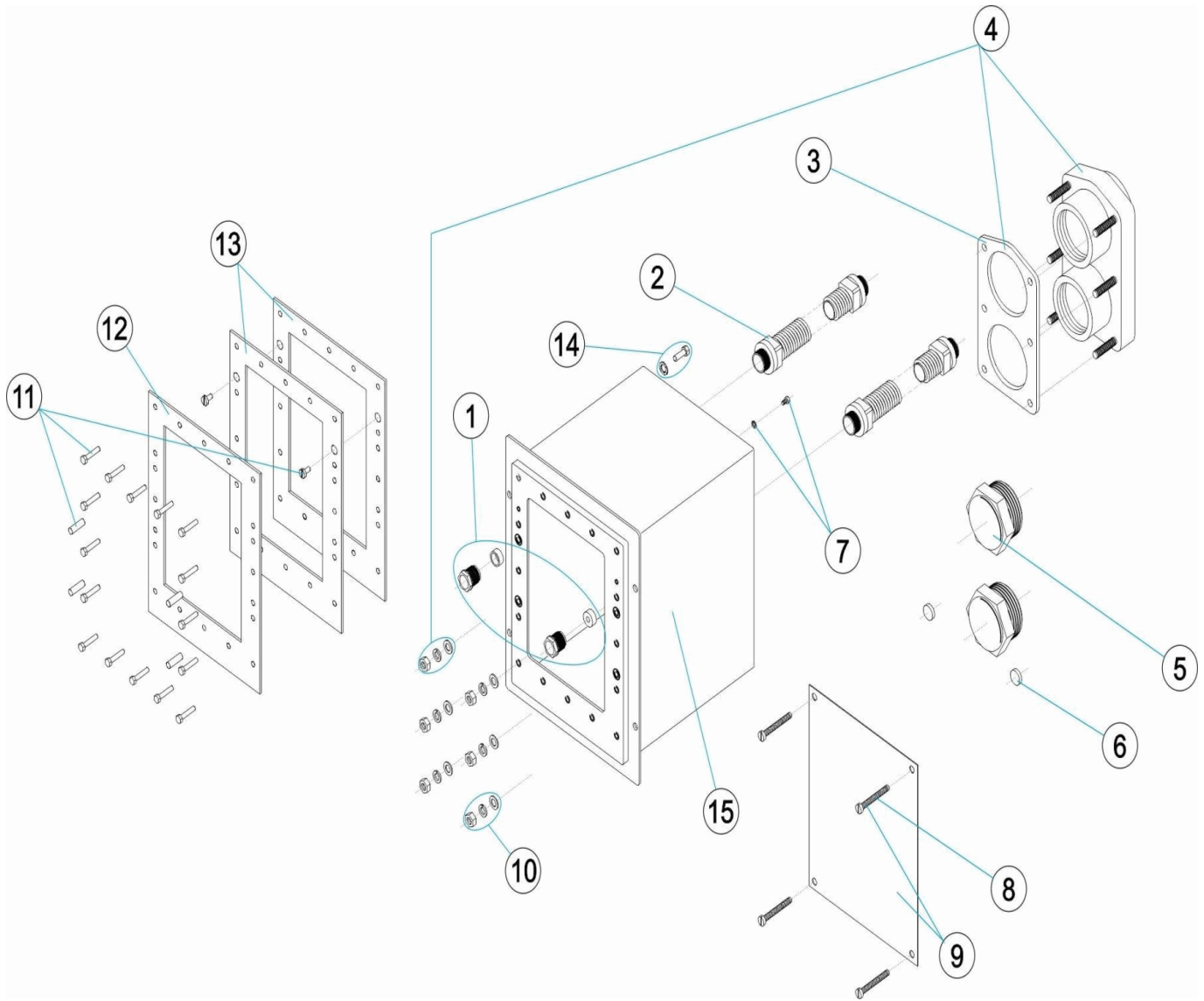
POS	CODE	DESCRIPTION	POS	CODE	DESCRIPTION
1	4402050110	CCU CABLE GLAND	9	4402050030	FORMWORK SHEET + SCREWS
2	4402050029	HOSE CABLE GLAND	10	4402050025	FLANGE SCREWS
3	4402050108	CCU GASKET COVER	11	4402050115	S.S. FRAME SCREWS
4	4402050107	FLANGE CONNECTION WITH GASKET	12	* 4402050504	S. S. FRAME
5	4402050027	THREADED CAP MALE 2"	13	* 4402011407	S.S. FRAME GASKET
6	4402050028	BLIND GASKET	14	* 4401090402	EARTH CONNECTION
7	4401090402	EARTH CONNECTION	15	00243R0100	S.S. HOUSING CASE
8	4402050026	BOLT SET BAG			

CODE **00243, 00248**DESCRIPTION: **ECC S.S. HOUSING CASE****OBSERVATIONS**

POS	CODE	OBSERVATIONS
12	4402050504	LINER
13	4402011407	LINER
14	4401090402	LINER

CODICE **00243, 00248**

DESCRIZIONE: **NICCHIA ALLOGGIAMENTO ECC INOX**



ITALIANO

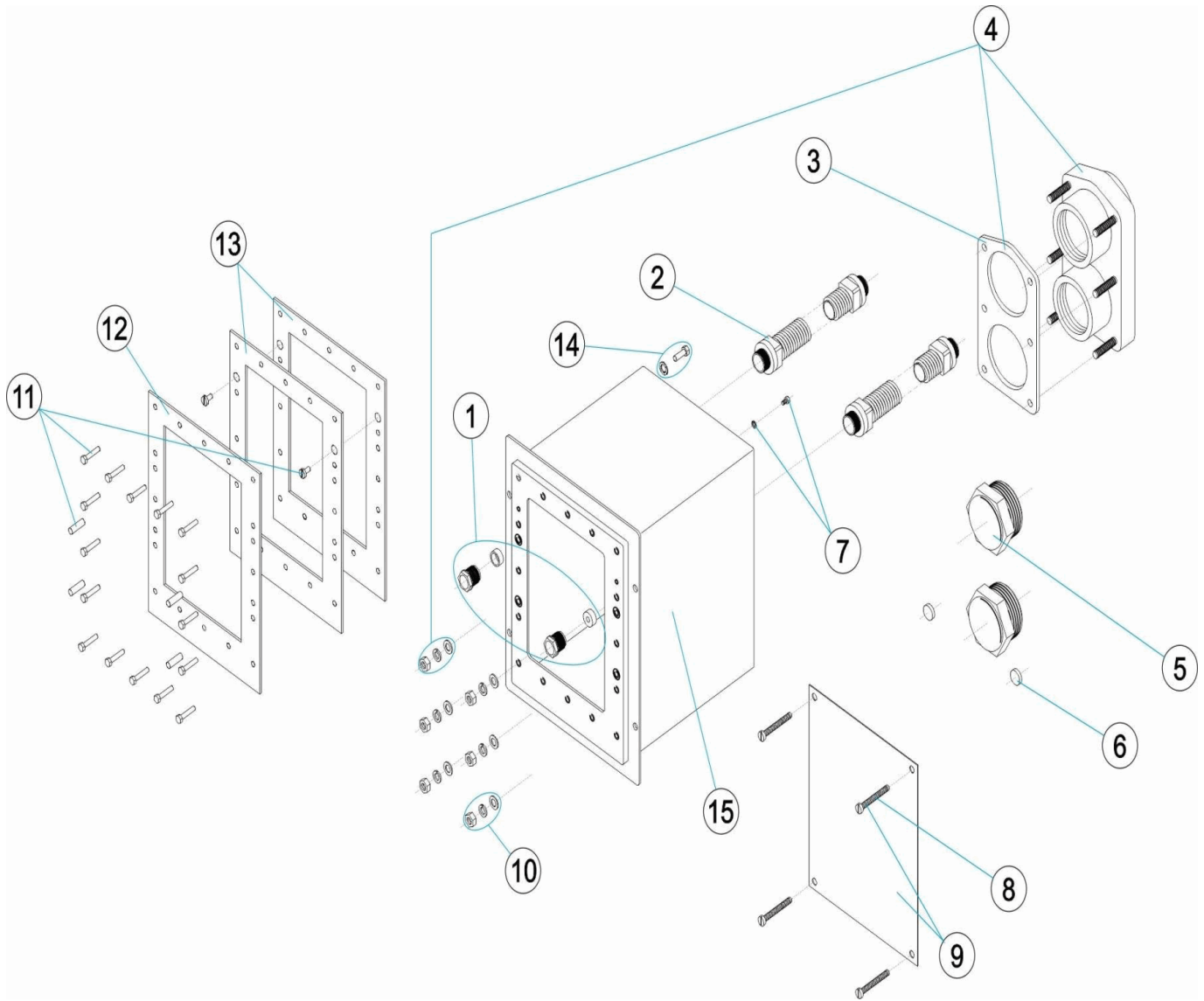
POS	CODICE	DESCRIZIONE	POS	CODICE	DESCRIZIONE
1	4402050110	PRESSACAVO N.C.C.	9	4402050030	PIASTRA + VITI
2	4402050029	MANICOTTO PASSACAVI	10	4402050025	BUTTONERIA FLANGIA
3	4402050108	GUARNIZIONE PER COPERCHIO N.C.C.	11	4402050115	BULLONERIA PER CORNICE INOX
4	4402050107	FLANGIA FISSAGGIO CON GUARNIZIONE	12	* 4402050504	CORNICE INOX
5	4402050027	TAPPO FILETTATO MASCHIO 2"	13	* 4402011407	GUARNIZIONE PER CORNICE INOX
6	4402050028	GUARNIZIONE CIECA	14	* 4401090402	PRESA A TERRA
7	4401090402	PRESA A TERRA	15	00243R0100	CORPO NICCHIA INOX
8	4402050026	SACCO VITI			

CODICE **00243, 00248**DESCRIZIONE: **NICCHIA ALLOGGIAMENTO ECC INOX****OSSERVAZIONI**

POS	CODICE	OSSERVAZIONI
12	4402050504	LINER
13	4402011407	LINER
14	4401090402	LINER

CODE **00243, 00248**

BESCHREIBUNG: **LAGERGEHÄUSE EDELSTAHL ECC**



DEUTSCH

POS	CODE	BESCHREIBUNG	POS	CODE	BESCHREIBUNG
1	4402050110	QUETSCHVERSCHRAUBUNG E.C.C.	9	4402050030	ABDECKUNG SCHRAUBEN
2	4402050029	SCHLAUCH KABELDURCHFÜHRUNG	10	4402050025	SCHRAUBENSATZ FLANSCH
3	4402050108	DICHTUNG ABDECKUNG E.C.C.	11	4402050115	SCHRAUBENSATZ RAHMEN EDELSTAHL
4	4402050107	ANSCHLUSSFLANSCH UND DICHTUNG	12	* 4402050504	EDELSTAHLRAHMEN
5	4402050027	STOPFEN AUSSENGEWINDE 2"	13	* 4402011407	DICHTUNG EDELSTAHLRAHMEN
6	4402050028	BLINDDICHTUNG	14	* 4401090402	ERDUNG
7	4401090402	ERDUNG	15	00243R0100	GEHÄUSE EDELSTAHLSCHRANK
8	4402050026	PACK SCHRAUBEN			

CODE **00243, 00248**

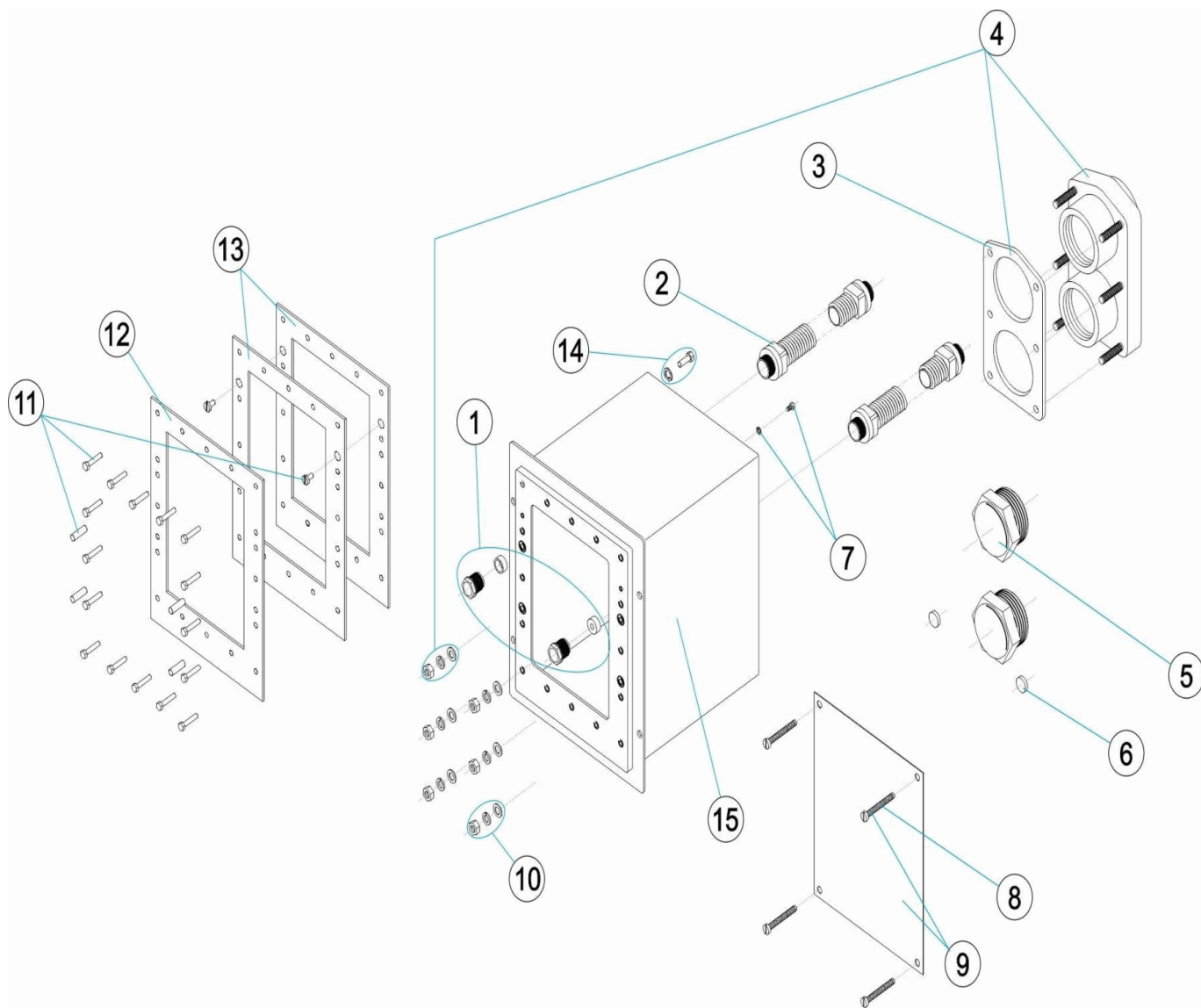
BESCHREIBUNG: **LAGERGEHÄUSE EDELSTAHL ECC**

HINWEISE

POS	CODE	HINWEISE
12	4402050504	LINER
13	4402011407	LINER
14	4401090402	LINER

CODIGO **00243, 00248**

DESCRIÇÃO: **CAIXA ALOJAMENTO INOX**



PORTUGUES

POS	CODIGO	DESCRIÇÃO	POS	CODIGO	DESCRIÇÃO
1	4402050110	BUCIN	9	4402050030	CHAPA COFRAGEM + PARAFUSOS
2	4402050029	MANGUEIRA PASSA-CABOS	10	4402050025	PARAFUSOS DA FLANGE
3	4402050108	JUNTA TAMPA E.C.C.	11	4402050115	PARAFUSOS ARO INOX
4	4402050107	FLANGE LIGAÇÃO COM JUNTA	12	* 4402050504	ARO INOX
5	4402050027	TAMPA ROSCA MACHO 2"	13	* 4402011407	JUNTA ARO INOX.
6	4402050028	JUNTA CEGA	14	* 4401090402	LIGAÇÃO A TERRA
7	4401090402	LIGAÇÃO A TERRA	15	00243R0100	CORPO CAIXA EM INOX
8	4402050026	BOLSA PARAFUSOS			

CODIGO **00243, 00248**DESCRIÇÃO: **CAIXA ALOJAMENTO INOX****OBSERVAÇÕES**

POS	CODIGO	OBSERVAÇÕES
12	4402050504	LINER
13	4402011407	LINER
14	4401090402	LINER