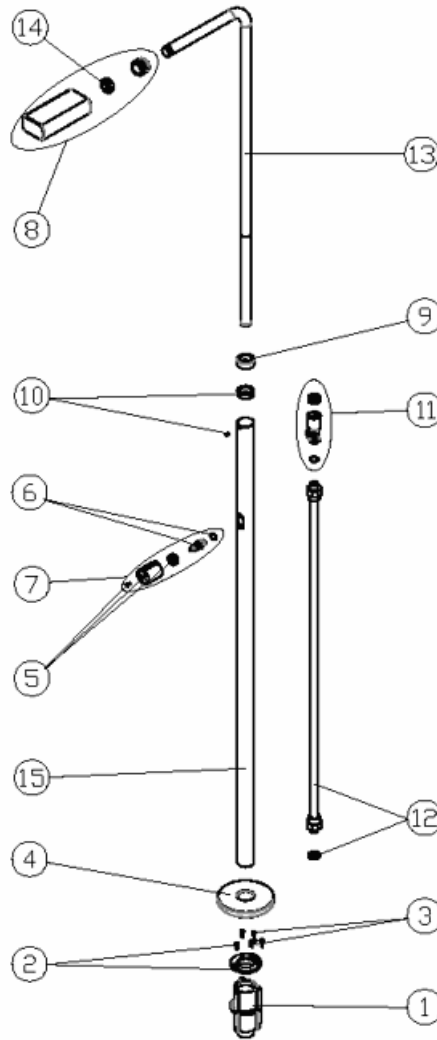


CODE **52717**

BESCHREIBUNG: **DUSCHE ANGEL**

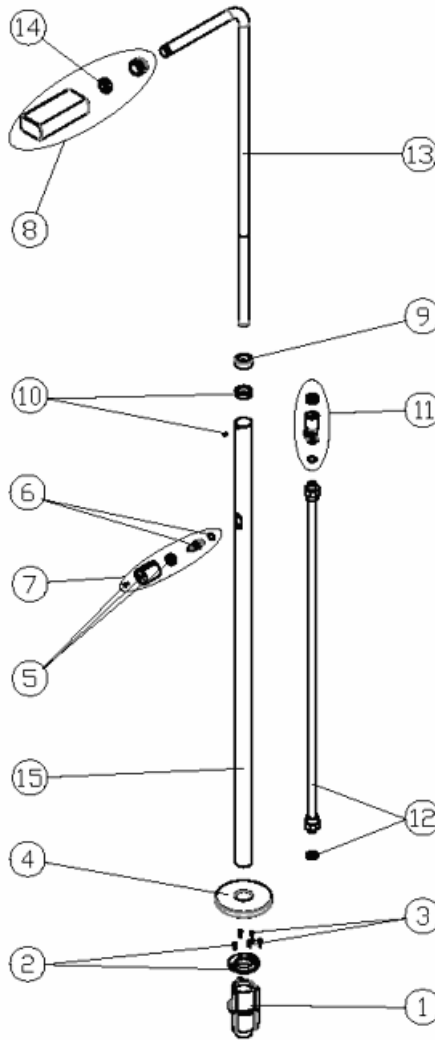


DEUTSCHE

| POS | CODE | BESCHREIBUNG | POS | CODE | BESCHREIBUNG |
|-----|------------|-------------------------------------|-----|------------|--------------------|
| 1 | 4401040109 | VERANKERUNG DUSCHE | 9 | 4401040106 | BLENDE DUSCHE OBEN |
| 2 | 4401040108 | BEFESTIGUNGSRING VERANKERUNG DUSCHE | 10 | 4401040022 | ABSTANDSRING |
| 3 | 4401040903 | ERDUNG | 11 | 4401040023 | VENTIL T-STÜCK |
| 4 | 4401040017 | DECKEL INNEN DUSCHE D. 43 | 12 | 4401040110 | ROHR 1/2" |
| 5 | 4401040018 | GRIFF ZYLINDERFÖRMIG | 13 | 4401040024 | DUSCHARM |
| 6 | 4401040019 | ACHSE VENTIL | 14 | 4401040021 | DICHTUNG ARM D. 40 |
| 7 | 4401040047 | SET GRIFF | 15 | 52717R0009 | AUSSENROHR D.43 |
| 8 | 4401040020 | SPRENGER RECHTECKIG | | | |

CODE **52717**

DESCRIPTION: **ANGEL SHOWER**

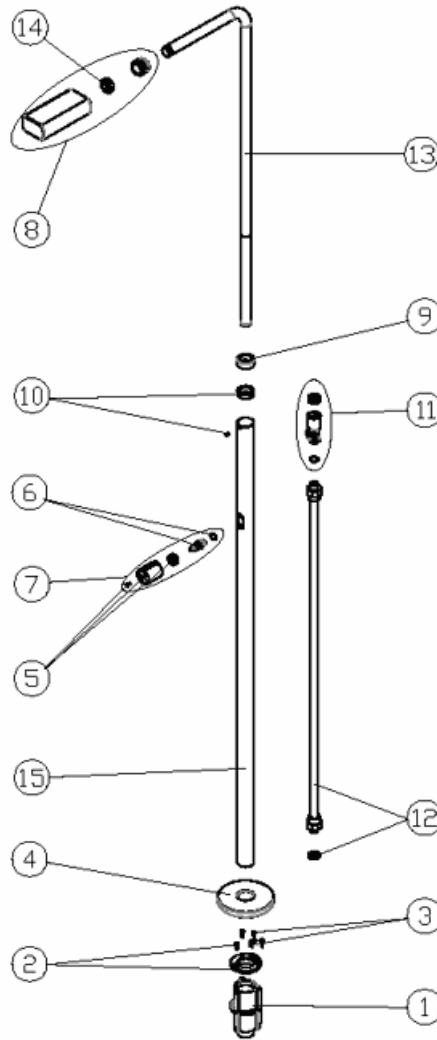


ENGLISH

| POS | CODE | DESCRIPTION | POS | CODE | DESCRIPTION |
|-----|------------|--------------------------|-----|------------|-------------------------|
| 1 | 4401040109 | SHOWER ANCHORING FIXTURE | 9 | 4401040106 | TOP ESCUTCHEON PLATE 43 |
| 2 | 4401040108 | SHOWER ANCHOR D 43 | 10 | 4401040022 | SHOE RING |
| 3 | 4401040903 | EARTH CONNECTION | 11 | 4401040023 | VALVE SOCKET |
| 4 | 4401040017 | D. 43 LOWER SHOWER COVER | 12 | 4401040110 | 1/2" PIPE |
| 5 | 4401040018 | CYLINDRICAL KNOB | 13 | 4401040024 | SHOWER ARM |
| 6 | 4401040019 | VALVE SHAFT | 14 | 4401040021 | D. 40 ARM JOINT |
| 7 | 4401040047 | KNOB | 15 | 52717R0009 | TUBE EXTERNAL 43MM |
| 8 | 4401040020 | RECTANGULAR NOZZLE | | | |

CODIGO **52717**

DESCRIPCION: **DUCHA ANGEL**

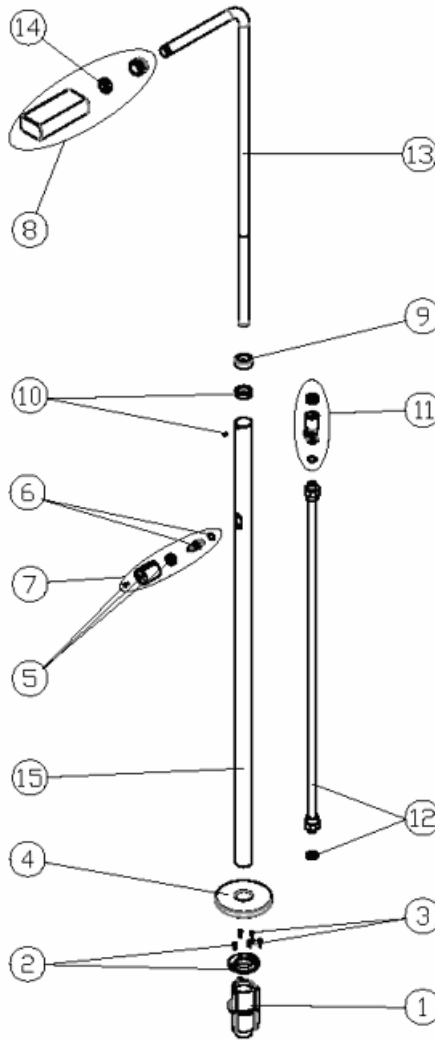


ESPAÑOL

| POS | CODIGO | DESCRIPCION | POS | CODIGO | DESCRIPCION |
|-----|------------|-----------------------------|-----|------------|----------------------------------|
| 1 | 4401040109 | CUERPO ANCLAJE DUCHA | 9 | 4401040106 | TAPETA EMBELLECEDORA SUPERIOR 43 |
| 2 | 4401040108 | FIJACION ANCLAJE DUCHA 43 | 10 | 4401040022 | ANILLO FIJACION |
| 3 | 4401040903 | TOMA DE TIERRA | 11 | 4401040023 | CUERPO VALVULA |
| 4 | 4401040017 | TAPETA INFERIOR DUCHA D. 43 | 12 | 4401040110 | TUBO 1/2" |
| 5 | 4401040018 | POMO CILINDRICO | 13 | 4401040024 | BRAZO DUCHA |
| 6 | 4401040019 | EJE VALVULA | 14 | 4401040021 | JUNTA BRAZO D. 40 |
| 7 | 4401040047 | CJTO. POMO DUCHA | 15 | 52717R0009 | TUBO EXTERIOR D. 43 |
| 8 | 4401040020 | ROCIADOR RECTANGULAR | | | |

CODE **52717**

DESCRIPTION: **DOUCHE ANGEL**

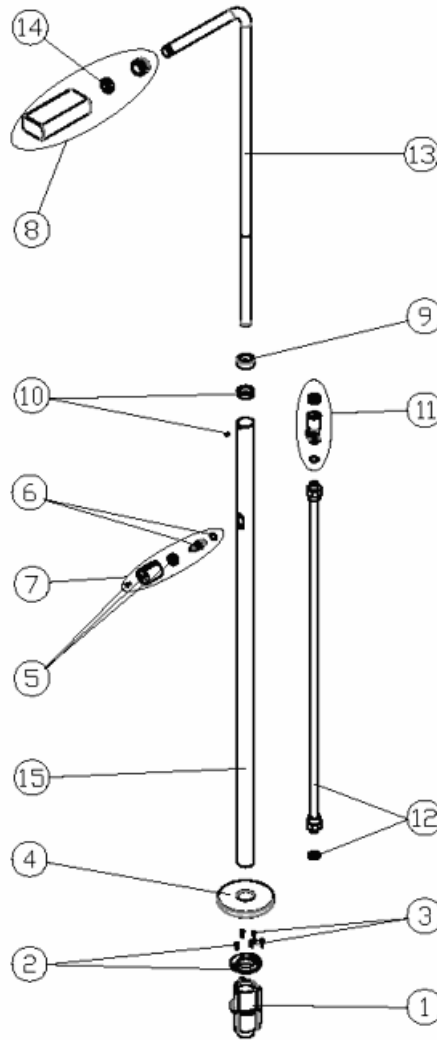


FRANCAIS

| POS | CODE | DESCRIPTION | POS | CODE | DESCRIPTION |
|-----|------------|---|-----|------------|-------------------------|
| 1 | 4401040109 | CORPS D'ANCRAGE DE DOUCHE | 9 | 4401040106 | ENJOLIVEUR SUPERIEUR 43 |
| 2 | 4401040108 | 1/2 ENCRAGE SUPERIEUR AVEC PRISE DE TERRE | 10 | 4401040022 | ANNEAU FIXATION |
| 3 | 4401040903 | PRISE DE TERRE | 11 | 4401040023 | TE ROBINET DE DOUCHE |
| 4 | 4401040017 | CACHE INFERIEUR DOUCHE D. 43 | 12 | 4401040110 | TUBE 1/2" |
| 5 | 4401040018 | POMMEAU CYLINDRIQUE | 13 | 4401040024 | BRAS DE DOUCHE |
| 6 | 4401040019 | AXE VANNE | 14 | 4401040021 | JOINT BRAS D. 40 |
| 7 | 4401040047 | ENSEMBLE POMMEAU | 15 | 52717R0009 | TUBE EXTERIEUR D.43 |
| 8 | 4401040020 | JET RECTANGULAIRE | | | |

CODICE **52717**

DESCRIZIONE: **DOCCIA ANGEL**

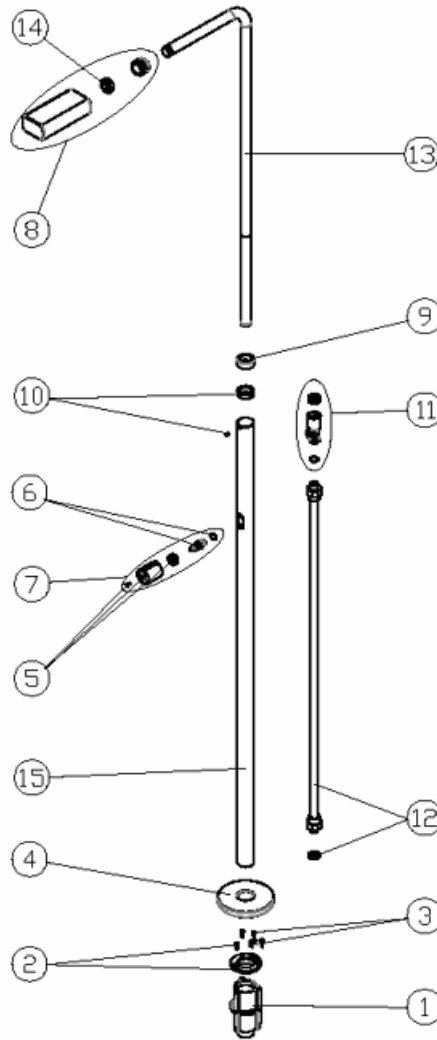


ITALIANO

| POS | CODICE | DESCRIZIONE | POS | CODICE | DESCRIZIONE |
|-----|------------|----------------------------------|-----|------------|------------------------|
| 1 | 4401040109 | CORPO ANCORAGGIO DOCCIA | 9 | 4401040106 | COPRIFLANGIA 43 |
| 2 | 4401040108 | FISSAGGIO ANCORAGGIO DOCCIA D 43 | 10 | 4401040022 | ANELLO FISSAGGIO |
| 3 | 4401040903 | PRESA A TERRA | 11 | 4401040023 | CORPO VALVOLA |
| 4 | 4401040017 | COPERTURA INFERIORE DOCCIA D. 43 | 12 | 4401040110 | TUBO 1/2" |
| 5 | 4401040018 | POMELLO CICLINDRICO | 13 | 4401040024 | BRACCIO DOCCIA |
| 6 | 4401040019 | ASSE VALVOLA | 14 | 4401040021 | GIUNTURA BRACCIO D. 40 |
| 7 | 4401040047 | SET MANOPOLA | 15 | 52717R0009 | TUBO ESTERNO D.43 |
| 8 | 4401040020 | SPRUZZATORE RETTANGOLARE | | | |

CODIGO **52717**

DESCRIÇÃO: **DUCHE ANGEL**



PORTUGUES

| POS | CODIGO | DESCRIÇÃO | POS | CODIGO | DESCRIÇÃO |
|-----|------------|-------------------------------------|-----|------------|---------------------|
| 1 | 4401040109 | CORPO ÂNCORA CHUVEIRO | 9 | 4401040106 | ANTIDERRAPANTE |
| 2 | 4401040108 | FIXAÇÃO ÂNCORA CHUVEIRO D 43 | 10 | 4401040022 | ANEL DE FIXAÇÃO |
| 3 | 4401040903 | LIGAÇÃO A TERRA | 11 | 4401040023 | CORPO VÁLVULA |
| 4 | 4401040017 | PLACA ESTANQUE INFERIOR DUCHE D. 43 | 12 | 4401040110 | TUBO 1/2" |
| 5 | 4401040018 | MAÇANETA CILÍNDRICA | 13 | 4401040024 | BRAÇO CHUVEIRO |
| 6 | 4401040019 | EIXO VÁLVULA | 14 | 4401040021 | JUNTA BRAÇO D. 40 |
| 7 | 4401040047 | CJTO. PUXADOR | 15 | 52717R0009 | TUBO EXTERIOR D. 43 |
| 8 | 4401040020 | DIFUSOR RECTANGULAR | | | |