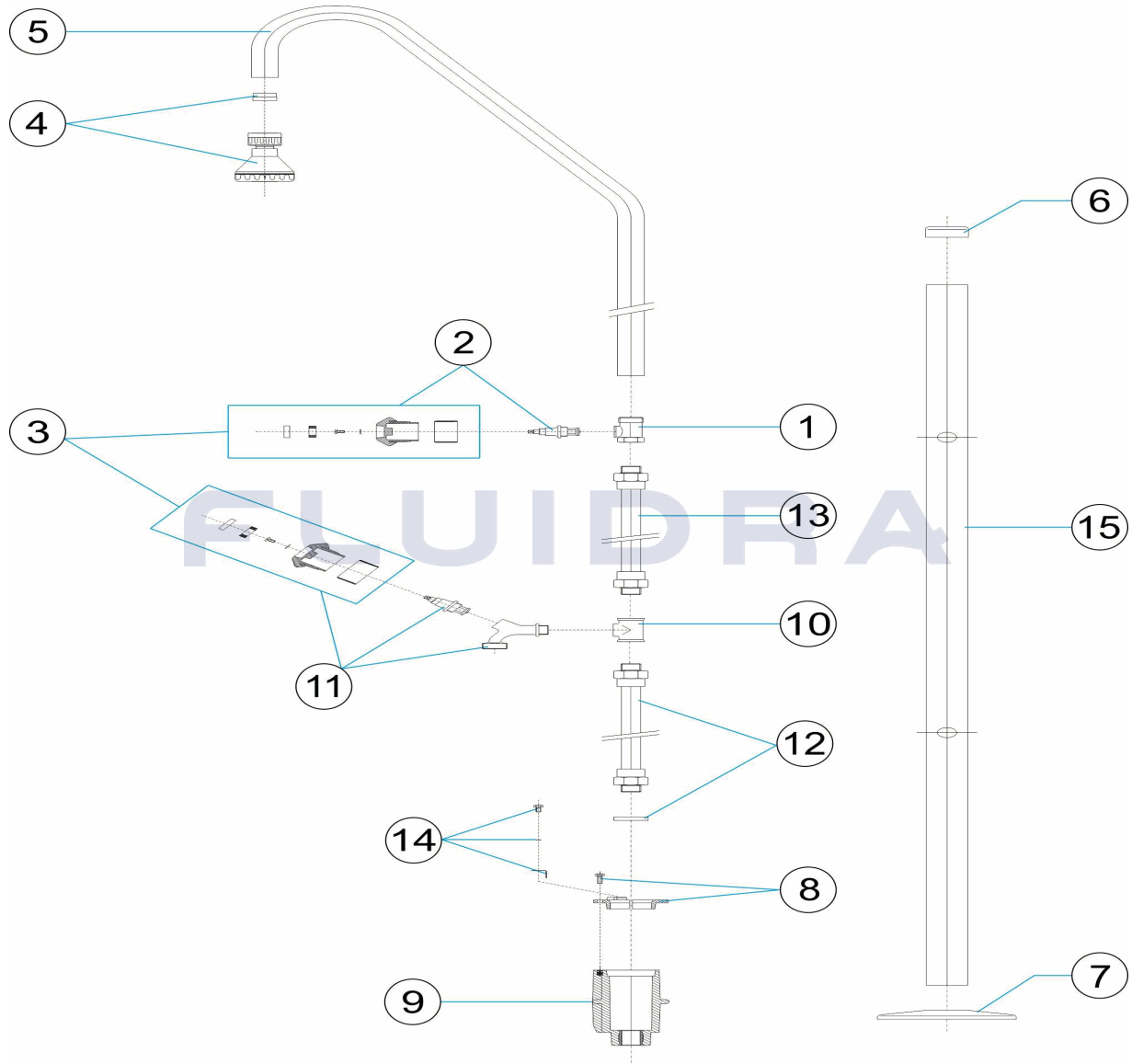


CODIGO **00092**

DESCRIPCION: **DUCHA 1 ROCIADOR 1 VALVULA Y LAVAPIES D.43**

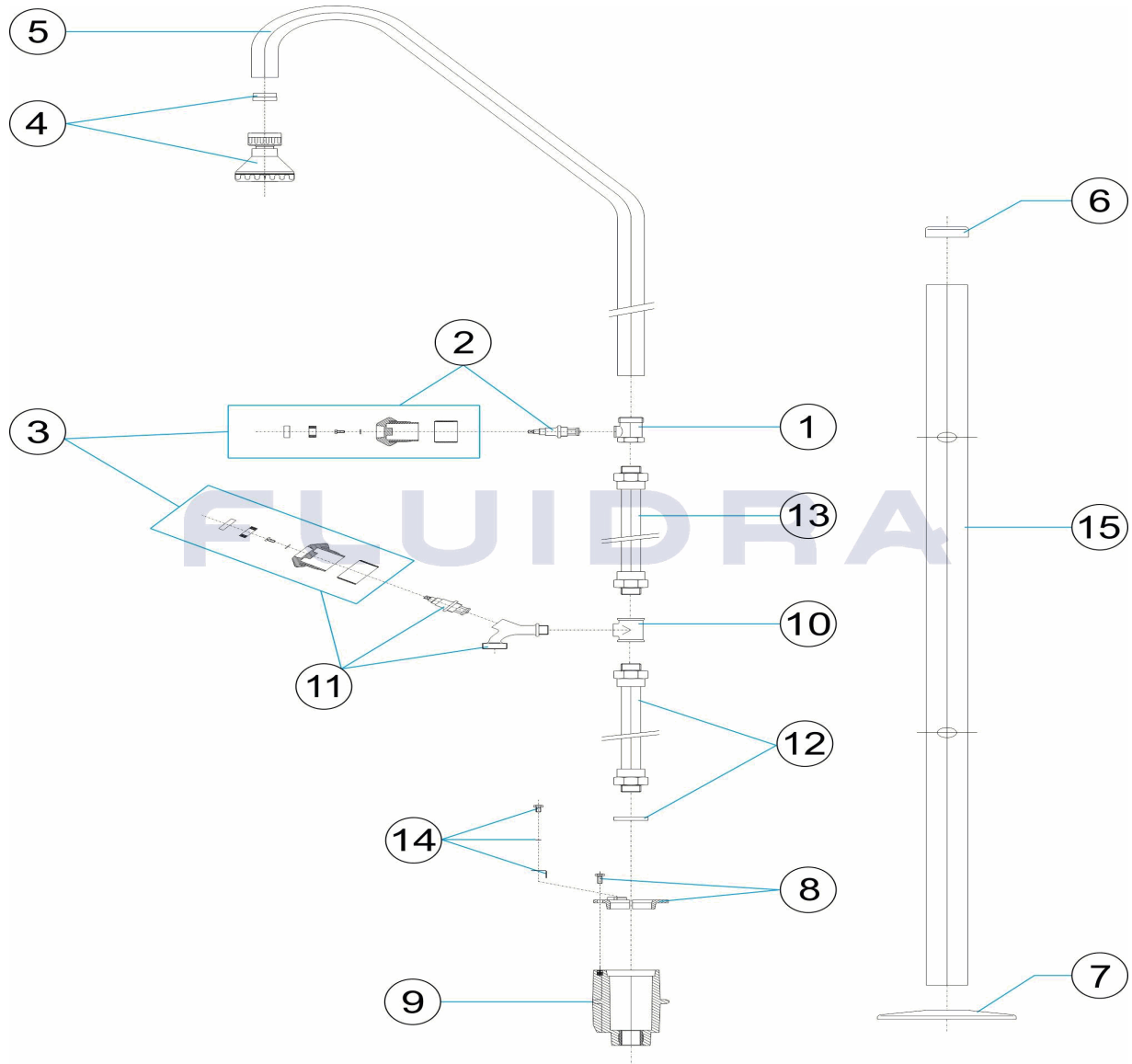


ESPAÑOL

POS	CODIGO	DESCRIPCION	CANTIDAD	POS	CODIGO	DESCRIPCION	CANTIDAD
1	4401040101	CUERPO VALVULA		9	4401040109	CUERPO ANCLAJE DUCHA	
2	4401040102	POMO PLASTICO + EJE		10	4401040210	TE' 1/2'	
3	4401040103	POMO PLASTICO		11	4401040211	POMO PLASTICO LAVAPIES	
4	4401040104	PIÑA DUCHA		12	4401040212	TUBO INFERIOR 1/2'	
5	4401040105	BRAZO DUCHA		13	4401041406	TUBO SUPERIOR 1/2"	
6	4401040106	TAPETA EMBELLECEDORA SUPERIOR 43		14	4401040903	TOMA DE TIERRA	
7	4401040107	TAPETA EMBELLECEDORA INFERIOR 43		15	00092R0001	TUBO EXTERIOR D. 43	
8	4401040108	FIJACION ANCLAJE DUCHA 43					

CODE 00092

DESCRIPTION: DOUCHE 1 POMMEAU 1 ROBINET ET LAVE-PIEDS D.43

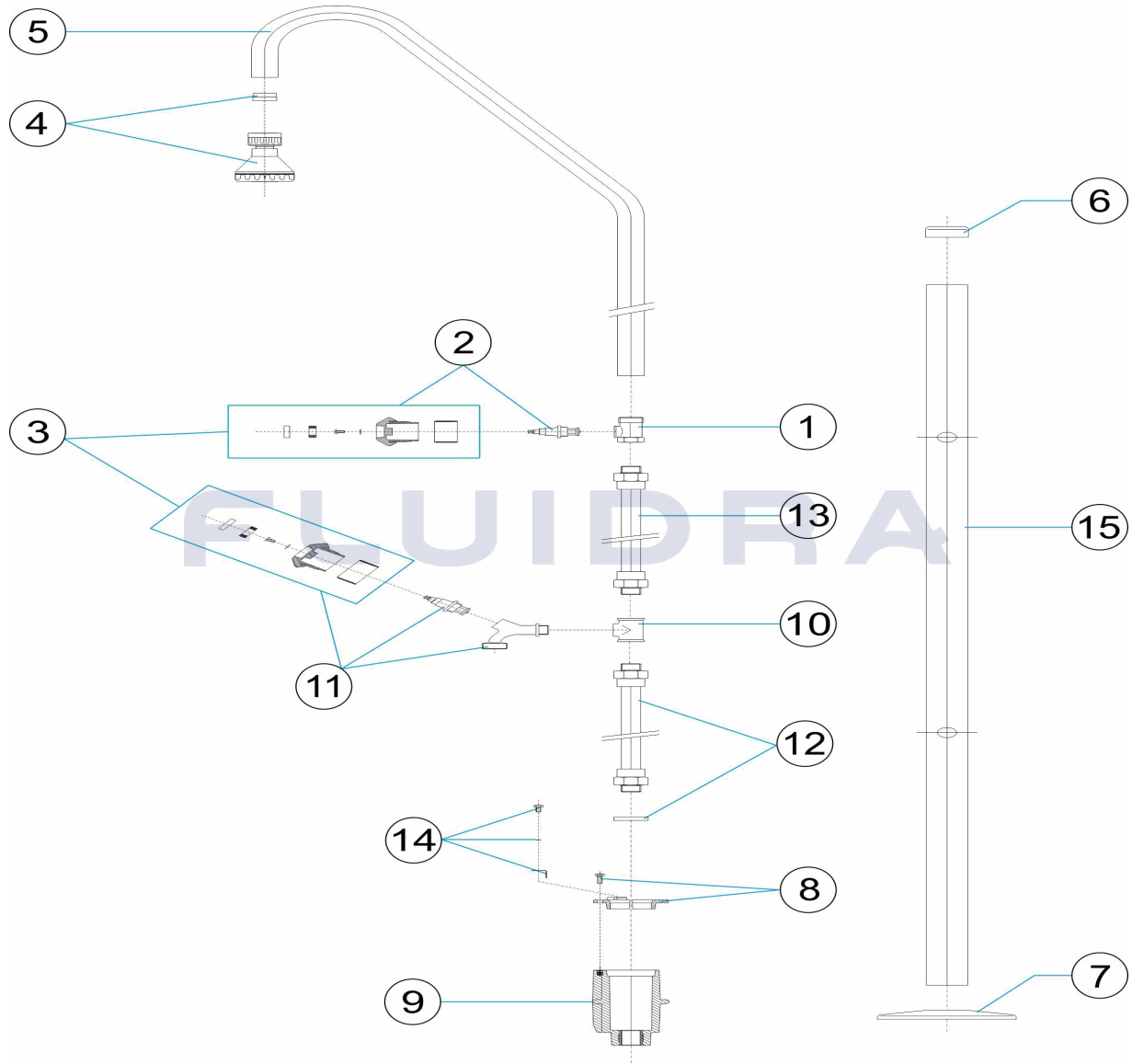


FRANCAIS

POS	CODE	DESCRIPTION	QUANTITE	POS	CODE	DESCRIPTION	QUANTITE
1	4401040101	TE ROBINET DE DOUCHE		9	4401040109	CORPS D'ANCRAGE DE DOUCHE	
2	4401040102	ROBINET PLASTIQUE + AXE		10	4401040210	TE 1/2"	
3	4401040103	ROBINET PLASTIQUE		11	4401040211	ROBINET PLASTIQUE RINCE PIEDS	
4	4401040104	POMMEAU DE DOUCHE		12	4401040212	TUBE INFÉRIEUR 1/2"	
5	4401040105	BRAS DE DOUCHE		13	4401041406	TUBE SUPERIEUR 1/2"	
6	4401040106	ENJOLIVEUR SUPERIEUR 43		14	4401040903	PRISE DE TERRE	
7	4401040107	ENJOLIVEUR INFERIEUR 43		15	00092R0001	TUBE EXTERIEUR D.43	
8	4401040108	1/2 ENCRAGE SUPÉRIEUR AVEC PRISE DE					

CODE **00092**

DESCRIPTION: **SHOWER 1 SHOWER HEAD 1 VALVE AND FOOT WASH D.43 PIPE**

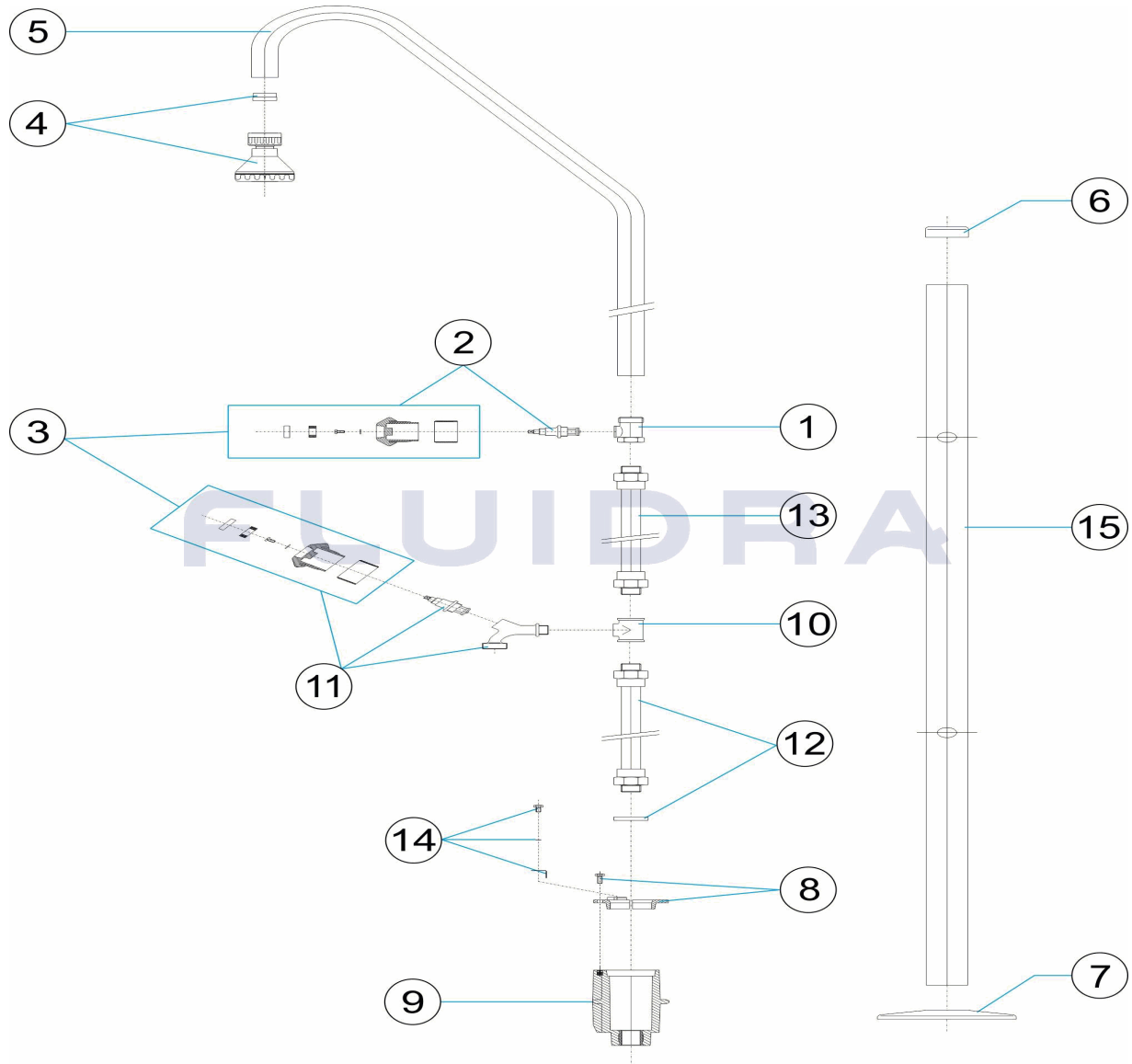


ENGLISH

POS	CODE	DESCRIPTION	QUANTITY	POS	CODE	DESCRIPTION	QUANTITY
1	4401040101	VALVE SOCKET		9	4401040109	SHOWER ANCHORING FIXTURE	
2	4401040102	PLASTIC HANDLE + PIN		10	4401040210	1/2' 'TE '	
3	4401040103	VALVE HANDLE		11	4401040211	FOOTWASH VALVE HANDLE	
4	4401040104	SHOWER HEAD		12	4401040212	1/2' BOTTOM PIPE	
5	4401040105	SHOWER ARM		13	4401041406	UPPER TUBE 1/2"	
6	4401040106	TOP ESCUTCHEON PLATE 43		14	4401040903	EARTH CONNECTION	
7	4401040107	BOTTOM ESCUTCHEON 43		15	00092R0001	COLUMN C71	
8	4401040108	SHOWER ANCHOR D 43					

CODICE **00092**

DESCRIZIONE: **DOCCIA 1 SPRUZZATORE 1 VALVOLA E LAVAPIEDI D. 43**

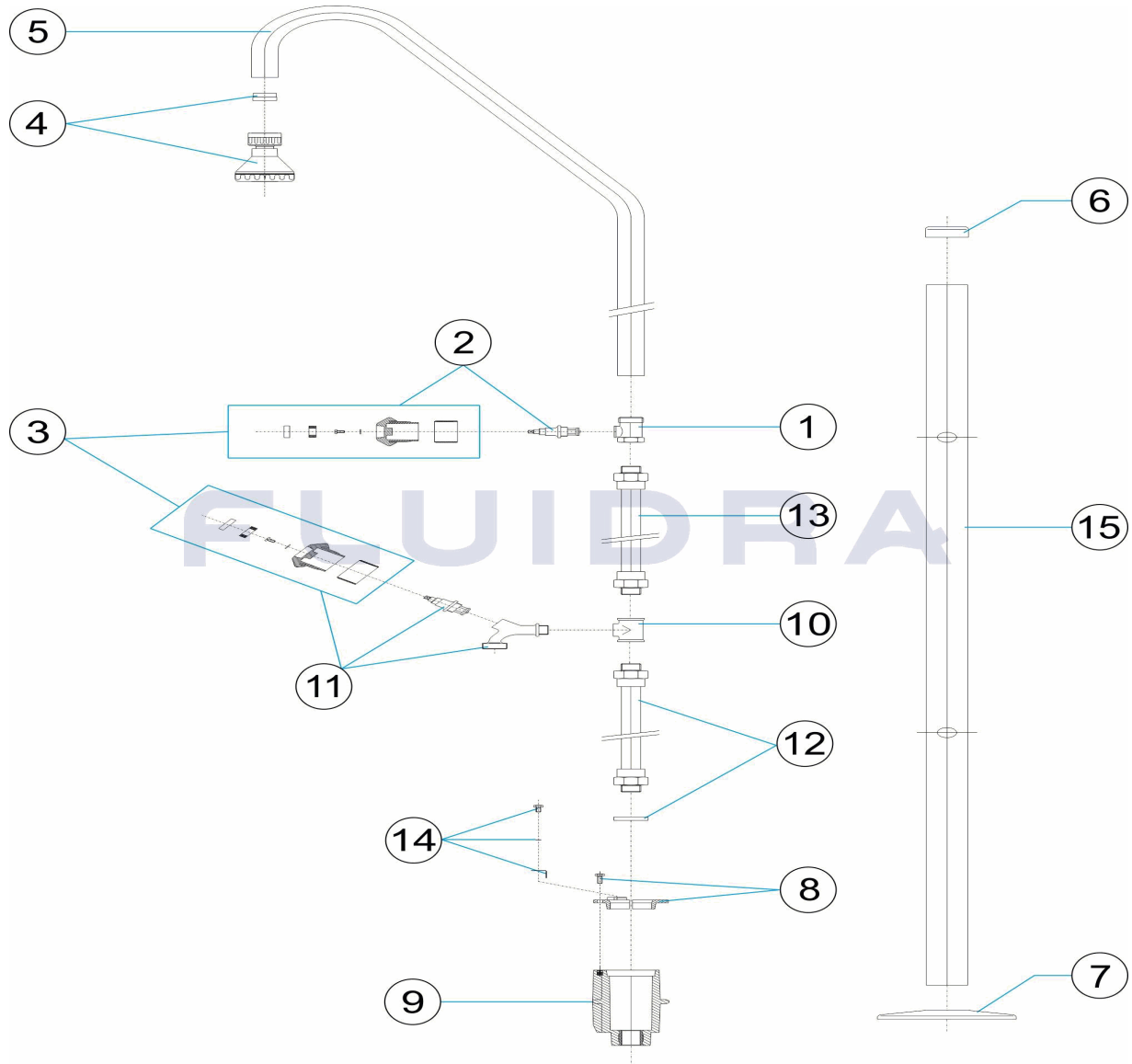


ITALIANO

POS	CODICE	DESCRIZIONE	QUANTITA'	POS	CODICE	DESCRIZIONE	QUANTITA'
1	4401040101	CORPO VALVOLA		9	4401040109	CORPO ANCORAGGIO DOCCIA	
2	4401040102	POMELLO + ASSE VALVOLA		10	4401040210	T' 1/2'	
3	4401040103	POMELLO IN PLASTICA		11	4401040211	POMELLO IN PLASTICA LAVAPIEDI	
4	4401040104	DIFFUSORE DOCCIA		12	4401040212	TUBO INFERIORE 1/2"	
5	4401040105	BRACCIO DOCCIA		13	4401041406	TUBO SUPERIORE 1/2"	
6	4401040106	COPRIFLANGIA 43		14	4401040903	PRESA A TERRA	
7	4401040107	COPRIFLANGIA 43		15	00092R0001	TUBO ESTERNO D.43	
8	4401040108	FISSAGGIO ANCORAGGIO DOCCIA D 43					

CODE **00092**

BESCHREIBUNG: **DUSCHE 1 DUSCHKOPF 1 VENTIL UND FUSSDUSCHE D.43**

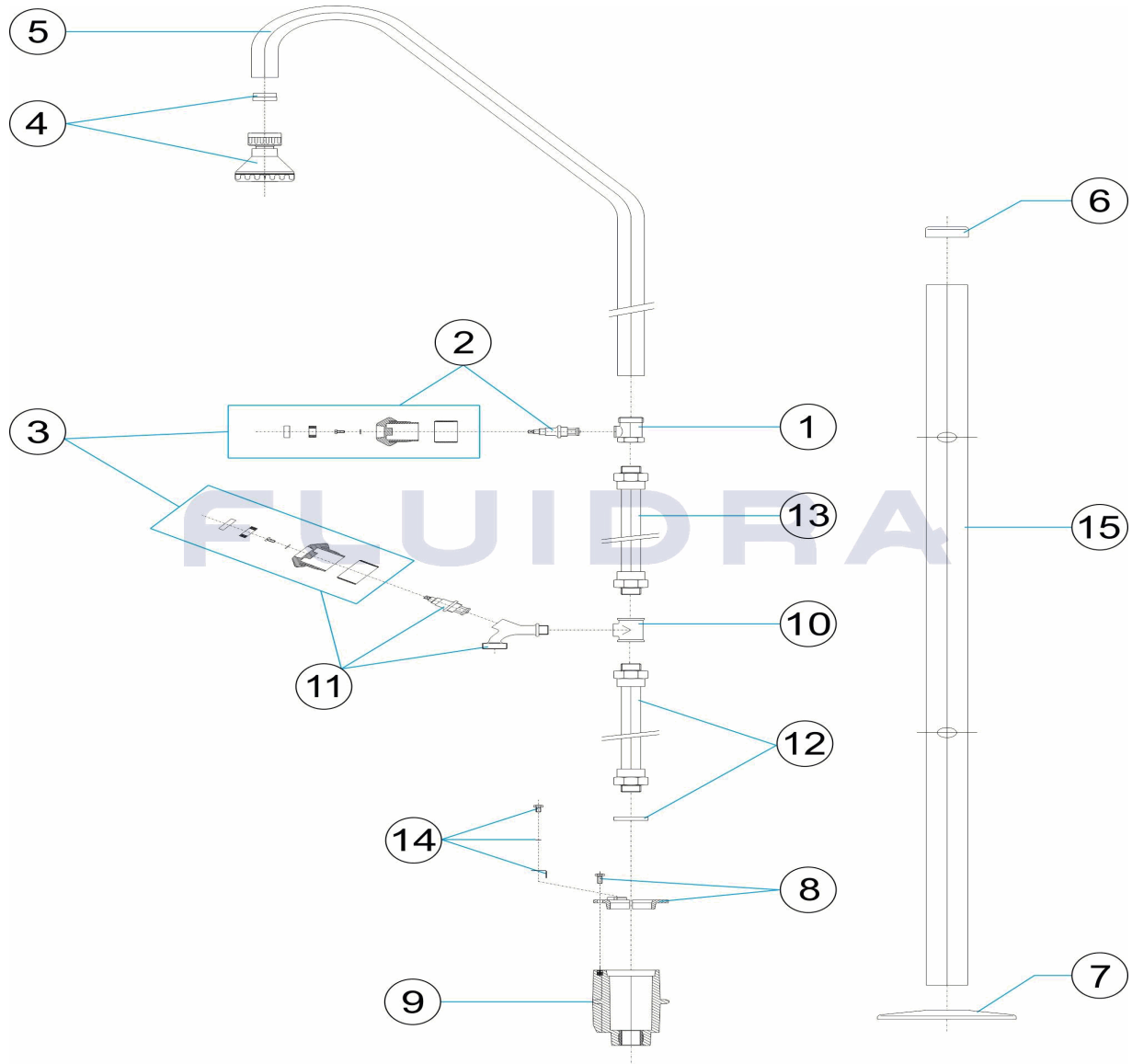


DEUTSCH

POS	CODE	BESCHREIBUNG	MENGE	POS	CODE	BESCHREIBUNG	MENGE
1	4401040101	GEHÄUSE VENTIL		9	4401040109	VERANKERUNG DUSCHEINHEIT	
2	4401040102	DREHGRIFF KUNSTSTOFF MIT ACHSE		10	4401040210	T-STÜCK 1/2"	
3	4401040103	DREHGRIFF KUNSTSTOFF		11	4401040211	DREHGRIFF KUNSTSTOFF FUSSDUSCHE	
4	4401040104	DUSCHKOPF		12	4401040212	ROHR UNTEN 1/2"	
5	4401040105	DUSCHARM		13	4401041406	ROHR OBEN 1/2"	
6	4401040106	DEKO-ABSCHLUSSRING OBEN 43		14	4401040903	ERDUNG	
7	4401040107	DEKO-ABSCHLUSSRING UNTEN 43		15	00092R0001	AUSSENROHR D. 43	
8	4401040108	FIXIERUNG DUSCHVERANKERUNG 43					

CODIGO **00092**

DESCRIÇÃO: **DUCHE 1 DIFUSOR 1 VÁLVULA E LAVA-PÉS D. 43**

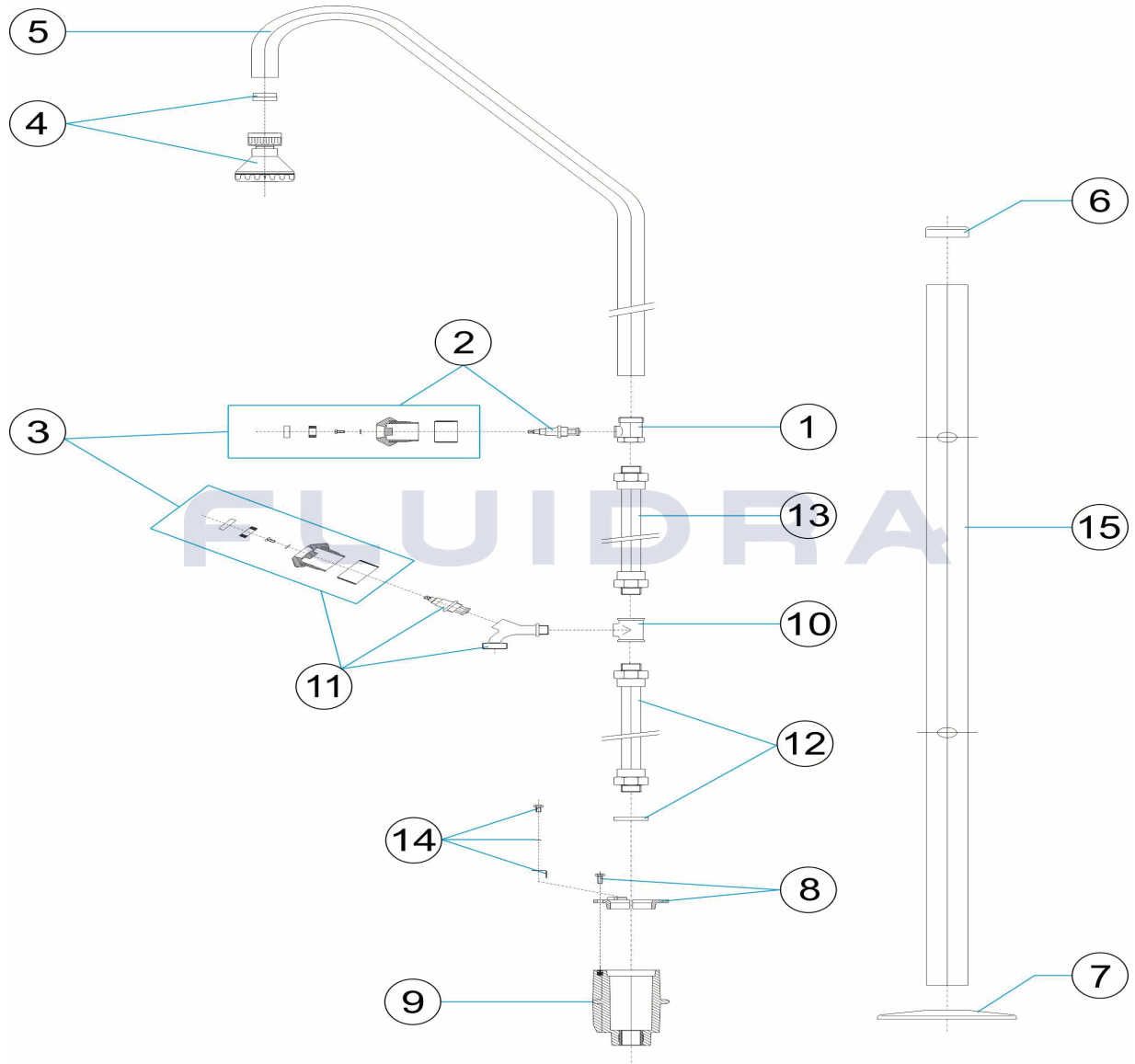


PORTUGUES

POS	CODIGO	DESCRIÇÃO	JANTIDADE	POS	CODIGO	DESCRIÇÃO	JANTIDADE
1	4401040101	CORPO VÁLVULA		9	4401040109	CORPO ÂNCORA CHUVEIRO	
2	4401040102	MANIPULO PLÁSTICO + EIXO		10	4401040210	TÊ' 1/2"	
3	4401040103	MANIPULO PLÁSTICO		11	4401040211	MANIPULO PLÁSTICO LAVA-PÉS	
4	4401040104	REGADOR CHUVEIRO		12	4401040212	TUBO INFERIOR 1/2"	
5	4401040105	BRAÇO CHUVEIRO		13	4401041406	TUBO SUPERIOR 1/2"	
6	4401040106	ANTIDERRAPANTE		14	4401040903	LIGAÇÃO A TERRA	
7	4401040107	ANTIDERRAPANTE		15	00092R0001	TUBO EXTERIOR D.43	
8	4401040108	FIXAÇÃO ÂNCORA CHUVEIRO D 43					

CODIGO **00092**

DESCRIPCION: **DUCHA 1 ROCIADOR 1 VALVULA Y LAVAPIES D.43**

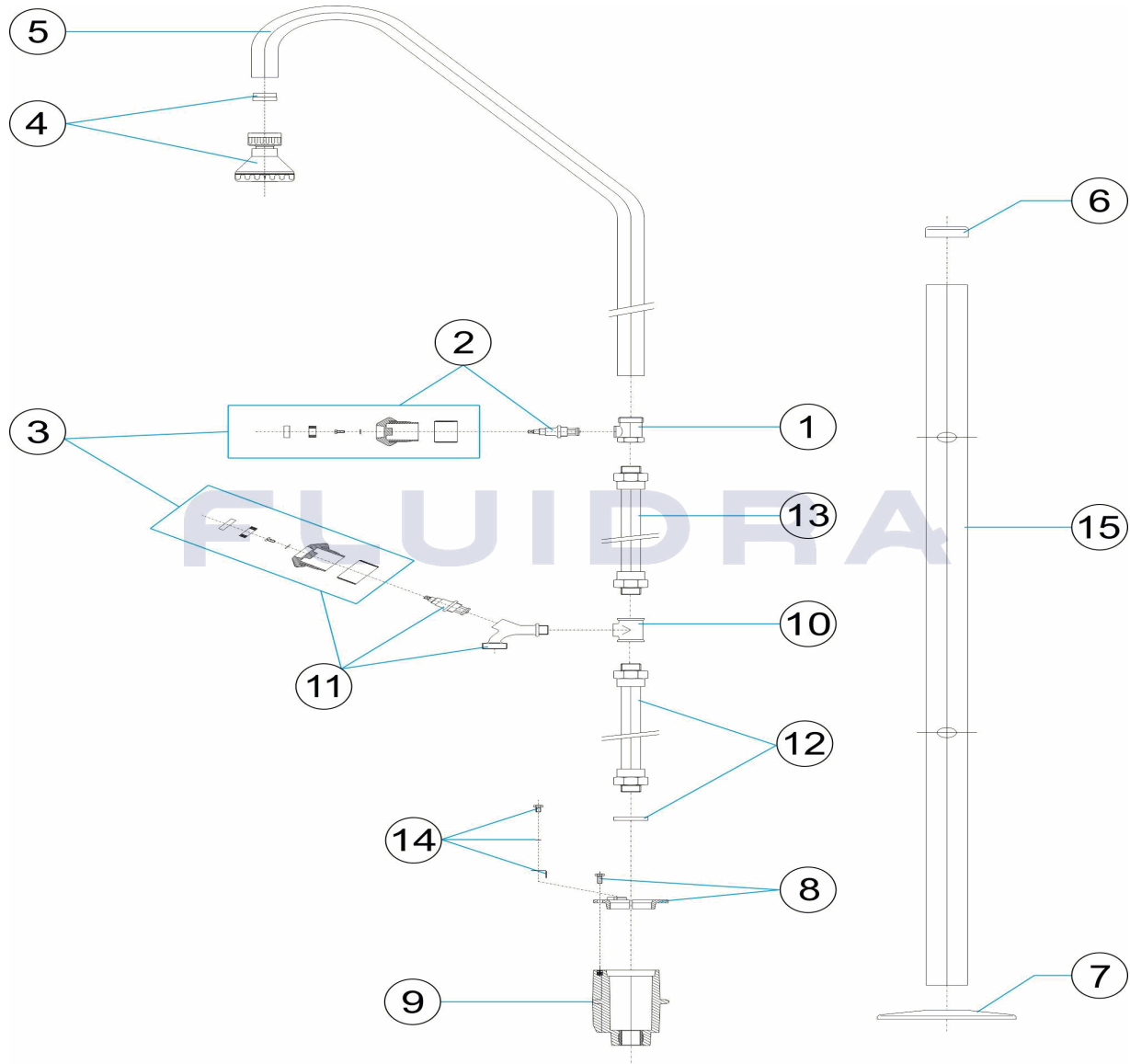


ESPAÑOL

POS	CODIGO	DESCRIPCION	CANTIDAD	POS	CODIGO	DESCRIPCION	CANTIDAD
1	4401040101	CUERPO VALVULA		9	4401040109	CUERPO ANCLAJE DUCHA	
2	4401040102	POMO PLASTICO + EJE		10	4401040210	TE' 1/2'	
3	4401040103	POMO PLASTICO		11	4401040211	POMO PLASTICO LAVAPIES	
4	4401040104	PIÑA DUCHA		12	4401040212	TUBO INFERIOR 1/2'	
5	4401040105	BRAZO DUCHA		13	4401041406	TUBO SUPERIOR 1/2"	
6	4401040106	TAPETA EMBELLECEDORA SUPERIOR 43		14	4401040903	TOMA DE TIERRA	
7	4401040107	TAPETA EMBELLECEDORA INFERIOR 43		15	00092R0001	TUBO EXTERIOR D. 43	
8	4401040108	FIJACION ANCLAJE DUCHA 43					

CODE 00092

DESCRIPTION: DOUCHE 1 POMMEAU 1 ROBINET ET LAVE-PIEDS D.43

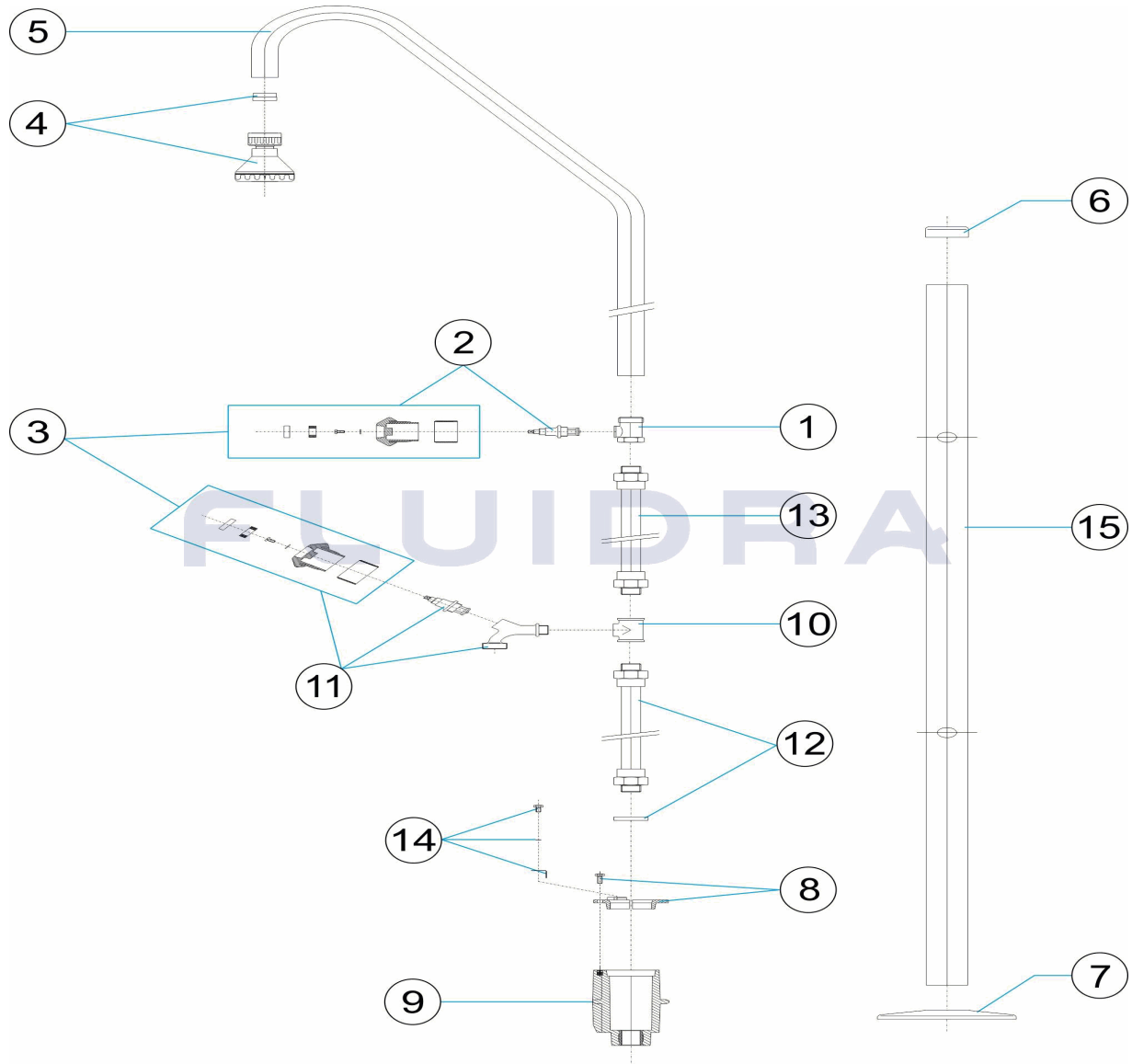


FRANCAIS

POS	CODE	DESCRIPTION	QUANTITE	POS	CODE	DESCRIPTION	QUANTITE
1	4401040101	TE ROBINET DE DOUCHE		9	4401040109	CORPS D'ANCRAGE DE DOUCHE	
2	4401040102	ROBINET PLASTIQUE + AXE		10	4401040210	TE 1/2"	
3	4401040103	ROBINET PLASTIQUE		11	4401040211	ROBINET PLASTIQUE RINCE PIEDS	
4	4401040104	POMMEAU DE DOUCHE		12	4401040212	TUBE INFÉRIEUR 1/2"	
5	4401040105	BRAS DE DOUCHE		13	4401041406	TUBE SUPERIEUR 1/2"	
6	4401040106	ENJOLIVEUR SUPERIEUR 43		14	4401040903	PRISE DE TERRE	
7	4401040107	ENJOLIVEUR INFERIEUR 43		15	00092R0001	TUBE EXTERIEUR D.43	
8	4401040108	1/2 ENCRAGE SUPÉRIEUR AVEC PRISE DE					

CODE **00092**

DESCRIPTION: **SHOWER 1 SHOWER HEAD 1 VALVE AND FOOT WASH D.43 PIPE**

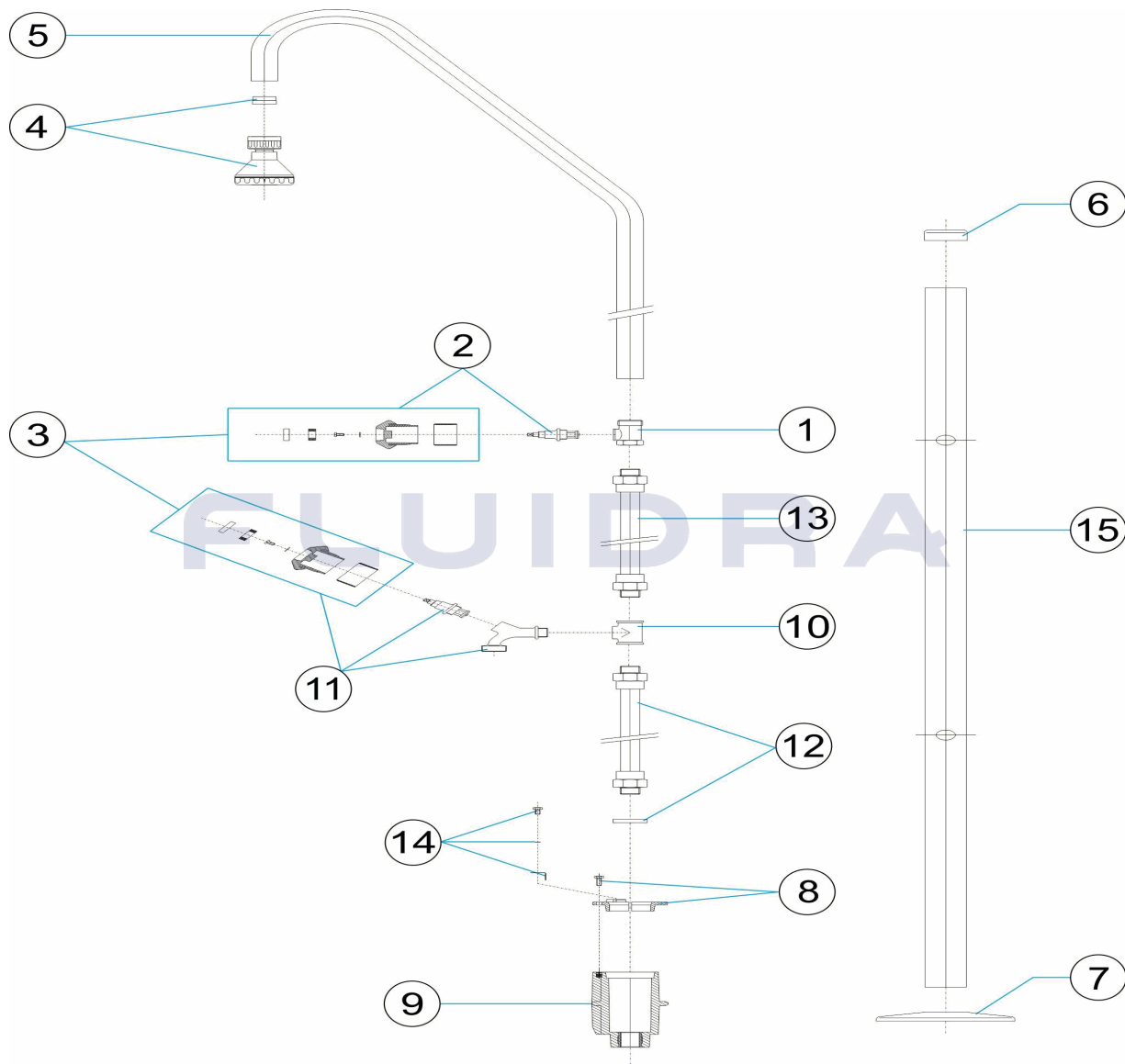


ENGLISH

POS	CODE	DESCRIPTION	QUANTITY	POS	CODE	DESCRIPTION	QUANTITY
1	4401040101	VALVE SOCKET		9	4401040109	SHOWER ANCHORING FIXTURE	
2	4401040102	PLASTIC HANDLE + PIN		10	4401040210	1/2' 'TE '	
3	4401040103	VALVE HANDLE		11	4401040211	FOOTWASH VALVE HANDLE	
4	4401040104	SHOWER HEAD		12	4401040212	1/2' BOTTOM PIPE	
5	4401040105	SHOWER ARM		13	4401041406	UPPER TUBE 1/2"	
6	4401040106	TOP ESCUTCHEON PLATE 43		14	4401040903	EARTH CONNECTION	
7	4401040107	BOTTOM ESCUTCHEON 43		15	00092R0001	COLUMN C71	
8	4401040108	SHOWER ANCHOR D 43					

CODICE **00092**

DESCRIZIONE: **DOCCIA 1 SPRUZZATORE 1 VALVOLA E LAVAPIEDI D. 43**

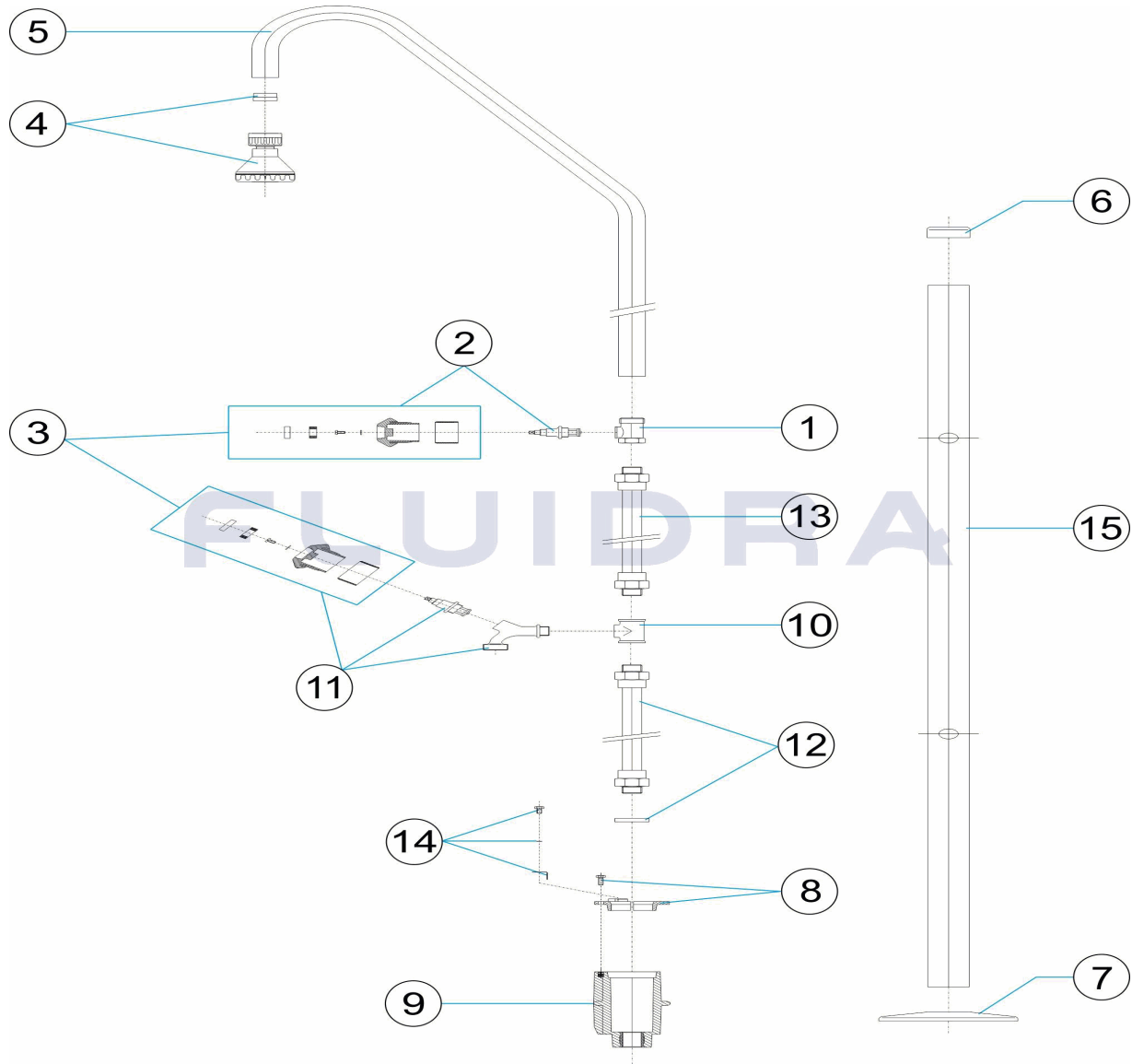


ITALIANO

POS	CODICE	DESCRIZIONE	QUANTITA'	POS	CODICE	DESCRIZIONE	QUANTITA'
1	4401040101	CORPO VALVOLA		9	4401040109	CORPO ANCORAGGIO DOCCIA	
2	4401040102	POMELLO + ASSE VALVOLA		10	4401040210	T' 1/2'	
3	4401040103	POMELLO IN PLASTICA		11	4401040211	POMELLO IN PLASTICA LAVAPIEDI	
4	4401040104	DIFFUSORE DOCCIA		12	4401040212	TUBO INFERIORE 1/2'	
5	4401040105	BRACCIO DOCCIA		13	4401041406	TUBO SUPERIORE 1/2"	
6	4401040106	COPRIFLANGIA 43		14	4401040903	PRESA A TERRA	
7	4401040107	COPRIFLANGIA 43		15	00092R0001	TUBO ESTERNO D.43	
8	4401040108	FISSAGGIO ANCORAGGIO DOCCIA D 43					

CODE **00092**

BESCHREIBUNG: **DUSCHE 1 DUSCHKOPF 1 VENTIL UND FUSSDUSCHE D.43**

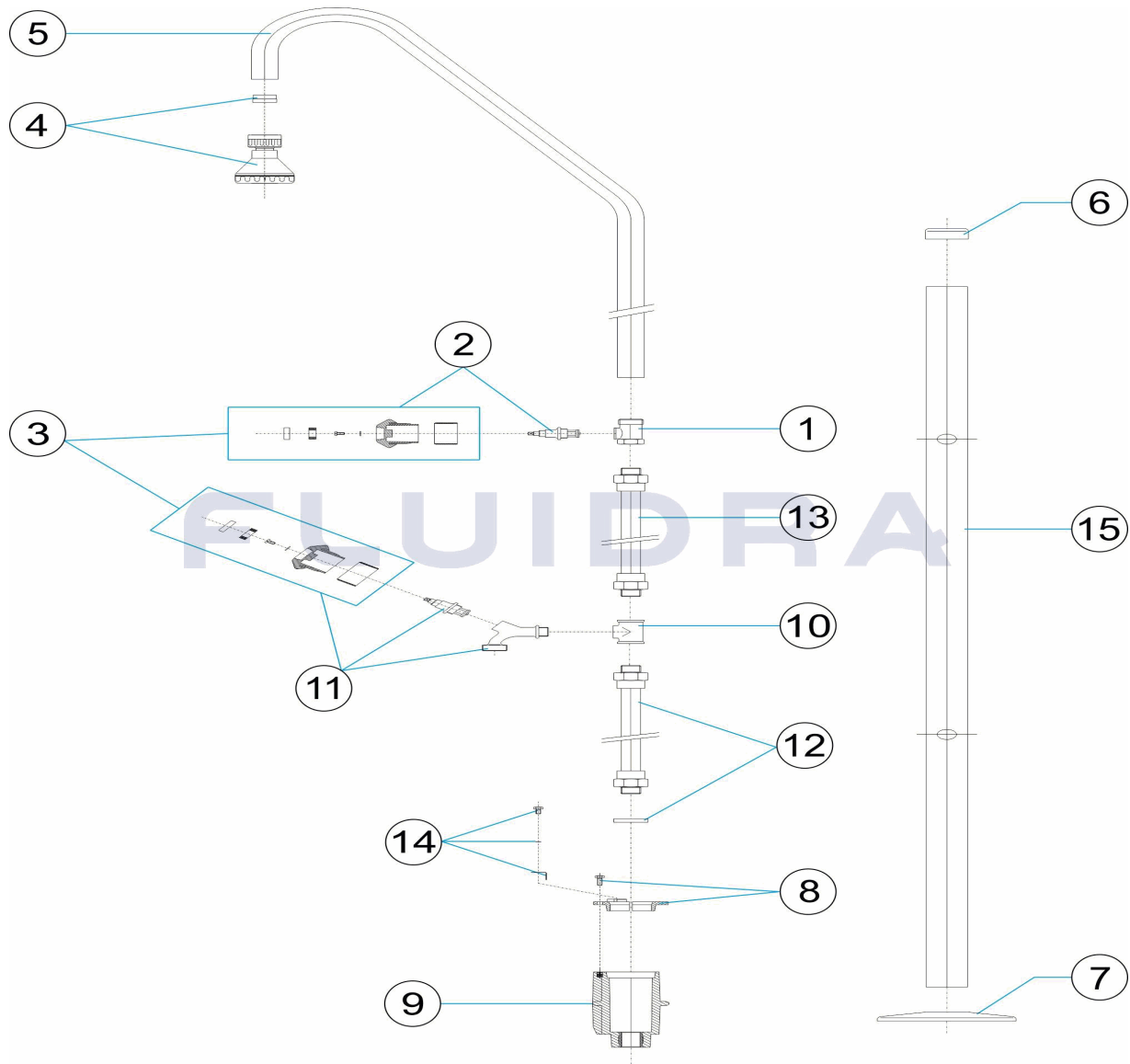


DEUTSCH

POS	CODE	BESCHREIBUNG	MENGE	POS	CODE	BESCHREIBUNG	MENGE
1	4401040101	GEHÄUSE VENTIL		9	4401040109	VERANKERUNG DUSCHEINHEIT	
2	4401040102	DREHGRIFF KUNSTSTOFF MIT ACHSE		10	4401040210	T-STÜCK 1/2"	
3	4401040103	DREHGRIFF KUNSTSTOFF		11	4401040211	DREHGRIFF KUNSTSTOFF FUSSDUSCHE	
4	4401040104	DUSCHKOPF		12	4401040212	ROHR UNTEN 1/2"	
5	4401040105	DUSCHARM		13	4401041406	ROHR OBEN 1/2"	
6	4401040106	DEKO-ABSCHLUSSRING OBEN 43		14	4401040903	ERDUNG	
7	4401040107	DEKO-ABSCHLUSSRING UNTEN 43		15	00092R0001	AUSSENROHR D. 43	
8	4401040108	FIXIERUNG DUSCHVERANKERUNG 43					

CODIGO 00092

DESCRIÇÃO: DUCHE 1 DIFUSOR 1 VÁLVULA E LAVA-PÉS D. 43



PORTUGUES

POS	CODIGO	DESCRIÇÃO	JANTIDADE	POS	CODIGO	DESCRIÇÃO	JANTIDADE
1	4401040101	CORPO VÁLVULA		9	4401040109	CORPO ÂNCORA CHUVEIRO	
2	4401040102	MANIPULO PLÁSTICO + EIXO		10	4401040210	TÊ' 1/2"	
3	4401040103	MANIPULO PLÁSTICO		11	4401040211	MANIPULO PLÁSTICO LAVA-PÉS	
4	4401040104	REGADOR CHUVEIRO		12	4401040212	TUBO INFERIOR 1/2"	
5	4401040105	BRAÇO CHUVEIRO		13	4401041406	TUBO SUPERIOR 1/2"	
6	4401040106	ANTIDERRAPANTE		14	4401040903	LIGAÇÃO A TERRA	
7	4401040107	ANTIDERRAPANTE		15	00092R0001	TUBO EXTERIOR D.43	
8	4401040108	FIXAÇÃO ÂNCORA CHUVEIRO D 43					