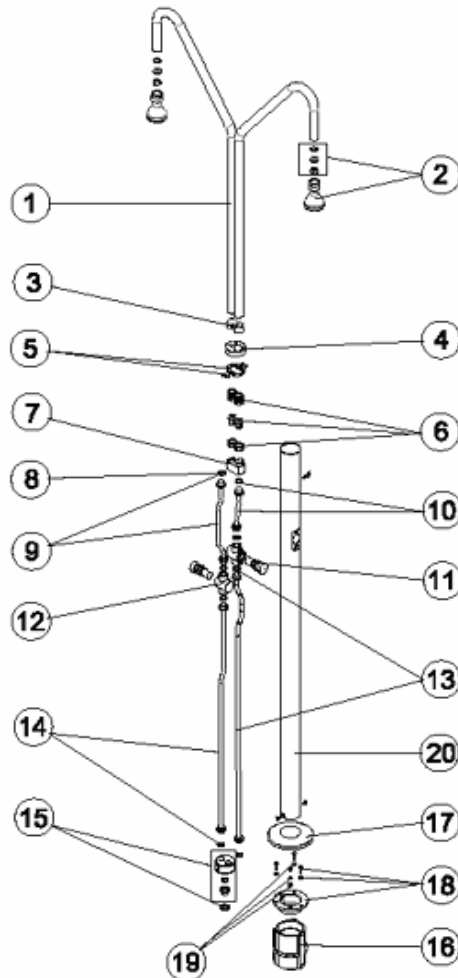


CODE **19947**

BESCHREIBUNG: **DUSCHE 2 DUSCHKÖPFE UND 2 TERMOSTATKNÖPFE**

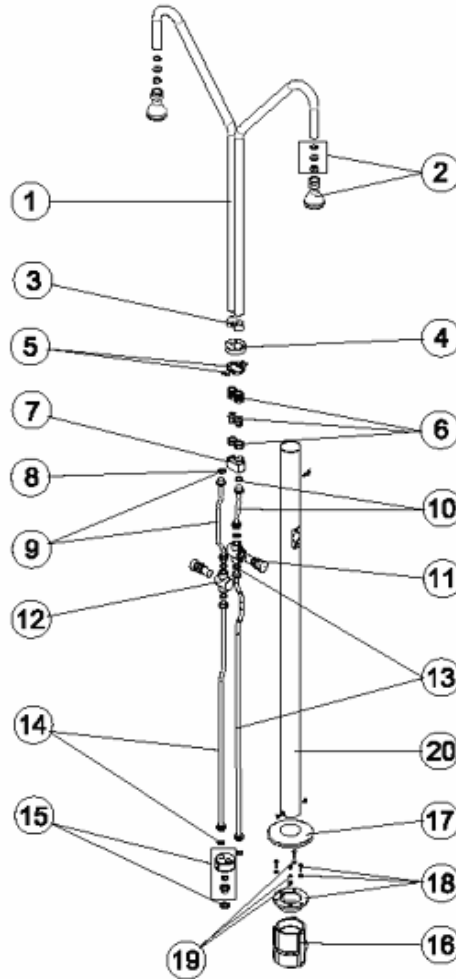


DEUTSCHE

POS	CODE	BESCHREIBUNG	POS	CODE	BESCHREIBUNG
1	4401040105	DUSCHARM	11	4401040502	AUTOMATIKVENTIL DUSCHE
2	4401040104	DUSCHKOPF KOMPLETT	12	4401040501	T-STÜCK UND AUTOMATIKVENTIL DUSCHE
3	4401040710	DUSCHARM HALTER DOPPELDUSCHE	13	4401040168	FLEXIBLER SCHLAUCH 1/2" M - M L=1050 MM.
4	4401040707	BLENDE OBEN DOPPELDUSCHE	14	4401040169	FLEXIBLER SCHLAUCH 1/2" M - M L=895 MM.
5	4401040134	BLOCKIERKLAMMER DUSCHARME	15	4401040170	STECKERABGANG UNTEN SET
6	4401040704	"3-TEILIGER ANSCHLUSSSATZ 3/4"-3/8"	16	4401042811	VERANKERUNG DUSCHE
7	4401043005	OBERE BEFESTIGUNG	17	4401040507	BLENDE UNTEN DUSCHE
8	4401040165	FLACHDICHTUNG D. 23,5X17X2	18	4401042810	BEFESTIGUNGSRING VERANKERUNG DUSCHE D 63
9	4401040166	FLEXIBLER SCHLAUCH 1/2" M - M L=310 MM.	19	4401040903	ERDUNG
10	4401040167	FLEXIBLER SCHLAUCH 1/2" M - M L=150 MM.	20	08731R0014	AUSSENROHR D.63

CODE **19947**

DESCRIPTION: **SHOWER 2 SHOWER HEADS AND 2 TIMER BUTTONS**

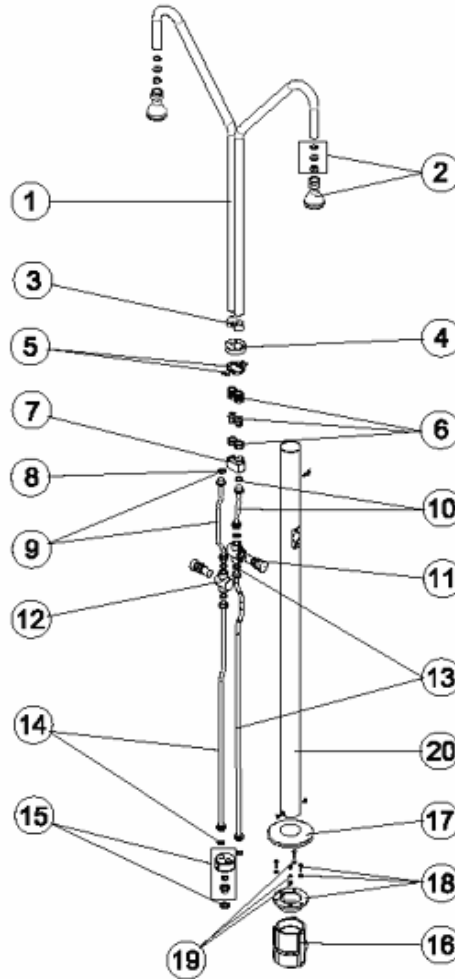


ENGLISH

POS	CODE	DESCRIPTION	POS	CODE	DESCRIPTION
1	4401040105	SHOWER ARM	11	4401040502	TIMER VALVE
2	4401040104	SHOWER HEAD	12	4401040501	TIMER VALVE BODY
3	4401040710	SHOWER ARMS HOLDER	13	4401040168	FLEXIBLE HOSE 1/2" M - M L=1050 MM.
4	4401040707	2 ARM SUPPORT ESCUTCHEON PLATE	14	4401040169	FLEXIBLE HOSE 1/2" M - M L=895 MM.
5	4401040134	ARM BLOCKING PIN	15	4401040170	SET BOTTOM CONNECTOR
6	4401040704	3 PIECE UNION	16	4401042811	SHOWER ANCHORING FIXTURE
7	4401043005	UPPER SUPPORT	17	4401040507	BOTTOM ESCUTCHEON PLATE
8	4401040165	INLET GASKET D. 23,5X17X2	18	4401042810	SHOWER ANCHOR D 63
9	4401040166	FLEXIBLE HOSE 1/2" M - M L=310 MM.	19	4401040903	EARTH CONNECTION
10	4401040167	FLEXIBLE HOSE 1/2" M - M L=150 MM.	20	08731R0014	EXTERNAL TUBE .63

CODIGO **19947**

DESCRIPCION: **DUCHA 2 ROCIADORES Y 2 PULSADORES TEMP.**

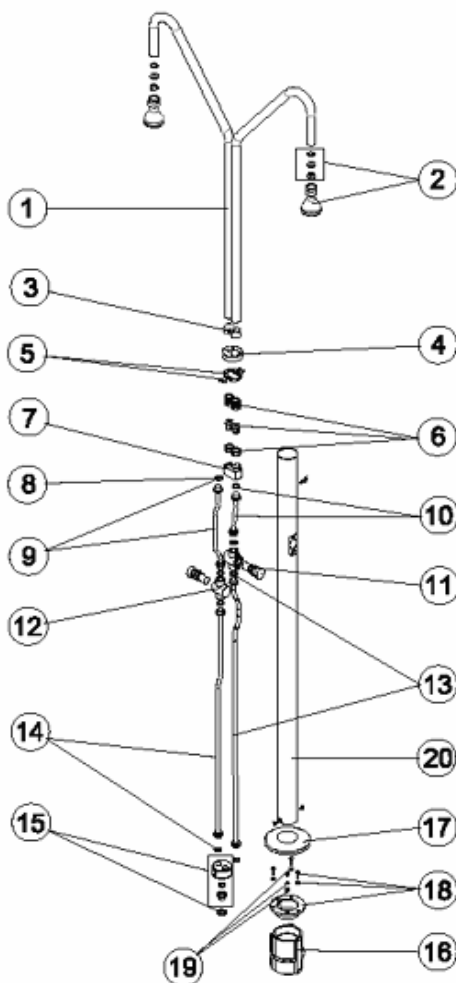


ESPAÑOL

POS	CODIGO	DESCRIPCION	POS	CODIGO	DESCRIPCION
1	4401040105	BRAZO DUCHA	11	4401040502	VALVULA TEMPORIZADORA
2	4401040104	PIÑA DUCHA	12	4401040501	CUERPO VALVULA TEMPORIZADORA
3	4401040710	TIRANTE BRAZOS DUCHA	13	4401040168	LATIGUILLO 1/2" MACHO - MACHO LOCO L=1050 M/M.
4	4401040707	TAPETA EMBELL. SUP. 2 BRAZOS	14	4401040169	LATIGUILLO 1/2" MACHO - MACHO LOCO L=895 M/M.
5	4401040134	GRAPA BLOQUEO BRAZOS	15	4401040170	CJTO. CONECTOR INFERIOR
6	4401040704	CJTO. ENLACE 3 PIEZAS	16	4401042811	CUERPO ANCLAJE DUCHA
7	4401043005	SOPORTE SUPERIOR	17	4401040507	TAPETA EMBELLECEDORA INFERIOR
8	4401040165	JUNTA PLANA D. 23.5X17X2	18	4401042810	FIJACION ANCLAJE DUCHA D 63
9	4401040166	LATIGUILLO 1/2" MACHO - MACHO LOCO L=310 M/M.	19	4401040903	TOMA DE TIERRA
10	4401040167	LATIGUILLO 1/2" MACHO - MACHO LOCO L=150 M/M.	20	08731R0014	TUBO EXTERIOR D. 63

CODE **19947**

DESCRIPTION: **DOUCHE 2 POMMEUX ET 2 BOUTONS-POUSOIRS TEMP.**

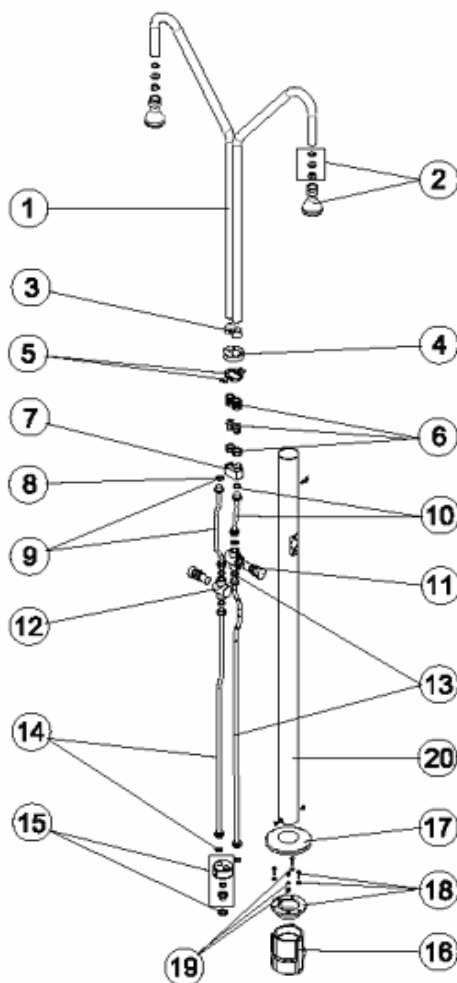


FRANCAIS

POS	CODE	DESCRIPTION	POS	CODE	DESCRIPTION
1	4401040105	BRAS DE DOUCHE	11	4401040502	BOUTON POUSSOIR
2	4401040104	POMMEAU DE DOUCHE	12	4401040501	TE ROBINET DE DOUCHE TEMPORISÉ
3	4401040710	COLLIER DE MAINTIEN EXTÉRIEUR DE TUBE	13	4401040168	TUYAU 1/2" M - M L=1050 MM.
4	4401040707	ENJOLIVEUR SUPERIEUR 2 BRAS.	14	4401040169	TUYAU 1/2" M - M L=895 MM.
5	4401040134	AGRAFE BLOCAGE BRAS	15	4401040170	JEU DE CONNECTEUR INFÉRIEUR
6	4401040704	UNION 3 PIECES	16	4401042811	CORPS D'ANCRAGE DE DOUCHE
7	4401043005	SUPPORT SUPÉRIEUR	17	4401040507	ENJOLIEUR INFÉRIEUR
8	4401040165	JOINT PLAT D. 23,5X17X2	18	4401042810	FIXATION ANCRAGE DOUCHE D 63
9	4401040166	TUYAU 1/2" M - M L=310 MM.	19	4401040903	PRISE DE TERRE
10	4401040167	TUYAU 1/2" M - M L=150 MM.	20	08731R0014	TUBE EXTERIEUR D.63

CODICE **19947**

DESCRIZIONE: **DOCCIA 2 SPRUZZATORI E 2 PULSANTI TEMPORIZZATI**

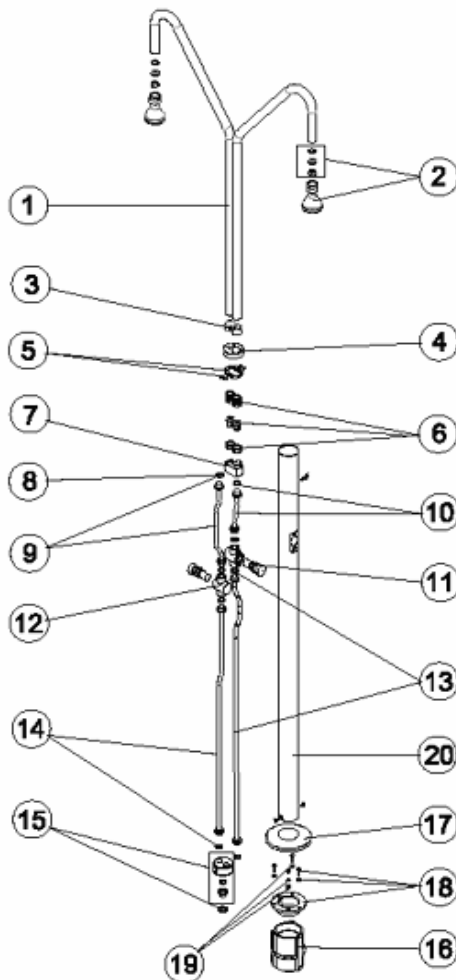


ITALIANO

POS	CODICE	DESCRIZIONE	POS	CODICE	DESCRIZIONE
1	4401040105	BRACCIO DOCCIA	11	4401040502	VALVOLA TEMPORIZZATA
2	4401040104	DIFFUSORE DOCCIA	12	4401040501	CORPO VALVOLA TEMPORIZZATA
3	4401040710	TIRANTE BRACCIO DOCCIA	13	4401040168	SPINOTTO 1/2" M - M L=1050 MM.
4	4401040707	COPRIFLANGIA SUPERIORE 2 BRACCI	14	4401040169	SPINOTTO 1/2" M - M L=895 MM.
5	4401040134	GRAFFA DI BLOCCAGGIO BRACCIA	15	4401040170	SET. CONNETTORE INFERIORE
6	4401040704	KIT BOCCHETTONE	16	4401042811	CORPO ANCORAGGIO DOCCIA
7	4401043005	SUPPORTO SUPERIORE	17	4401040507	COPRIFLANGIA INFERIORE
8	4401040165	GUERNICIONE PIANA D. 23.5X17X2	18	4401042810	FISSAGGIO ANCORAGGIO DOCCIA D 63
9	4401040166	SPINOTTO 1/2" M - M L=310 MM.	19	4401040903	PRESA A TERRA
10	4401040167	SPINOTTO 1/2" M - M L=150 MM.	20	08731R0014	TUBO ESTERNO D.63

CODIGO 19947

DESCRIÇÃO: DUCHE 2 DIFUSORES E 2 TORNEIRAS TEMP.



PORTUGUES

POS	CODIGO	DESCRIÇÃO	POS	CODIGO	DESCRIÇÃO
1	4401040105	BRAÇO CHUVEIRO	11	4401040502	VÁLVULA TEMPORIZADA
2	4401040104	REGADOR CHUVEIRO	12	4401040501	CORPO VÁLVULA TEMPORIZADORA
3	4401040710	TIRANTE BRAÇOS CHUVEIRO	13	4401040168	MANGA 1/2" M - M L=1050 MM.
4	4401040707	TAMPA EMBELEZADORA SUP. 2 BRAÇOS	14	4401040169	MANGA 1/2" M - M L=895 MM.
5	4401040134	GANCHO BLOQUEIO BRAÇOS	15	4401040170	CONJUNTO. CONECTOR INFERIOR
6	4401040704	CONJUNTO UNIÃO 3 PEÇAS	16	4401042811	CORPO ÂNCORA CHUVEIRO
7	4401043005	SUPORTE SUPERIOR	17	4401040507	TAMPA EMBELEZADORA INFERIOR
8	4401040165	JUNTA PLANA D. 23,5X17X2	18	4401042810	FIXAÇÃO ÂNCORA CHUVEIRO D 63
9	4401040166	MANGA 1/2" M - M L=310 MM.	19	4401040903	LIGAÇÃO A TERRA
10	4401040167	MANGA 1/2" M - M L=150 MM.	20	08731R0014	TUBO EXTERIOR D.63