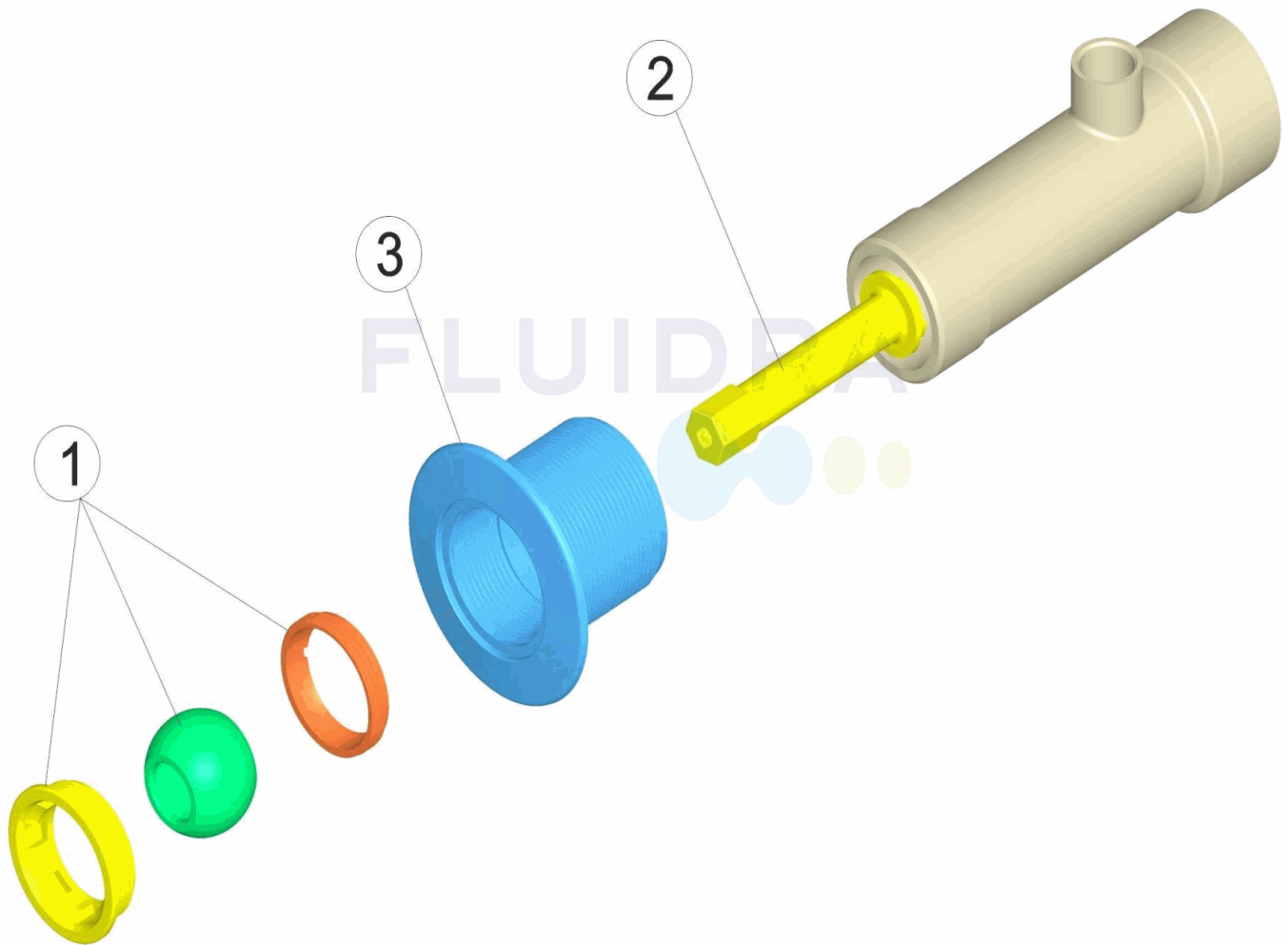


CODIGO **32113, 32370**

DESCRIPCION: **BOQUILLA PAR MASAJE PIS, HORMIGON 169 - 254 M/M**



ESPAÑOL

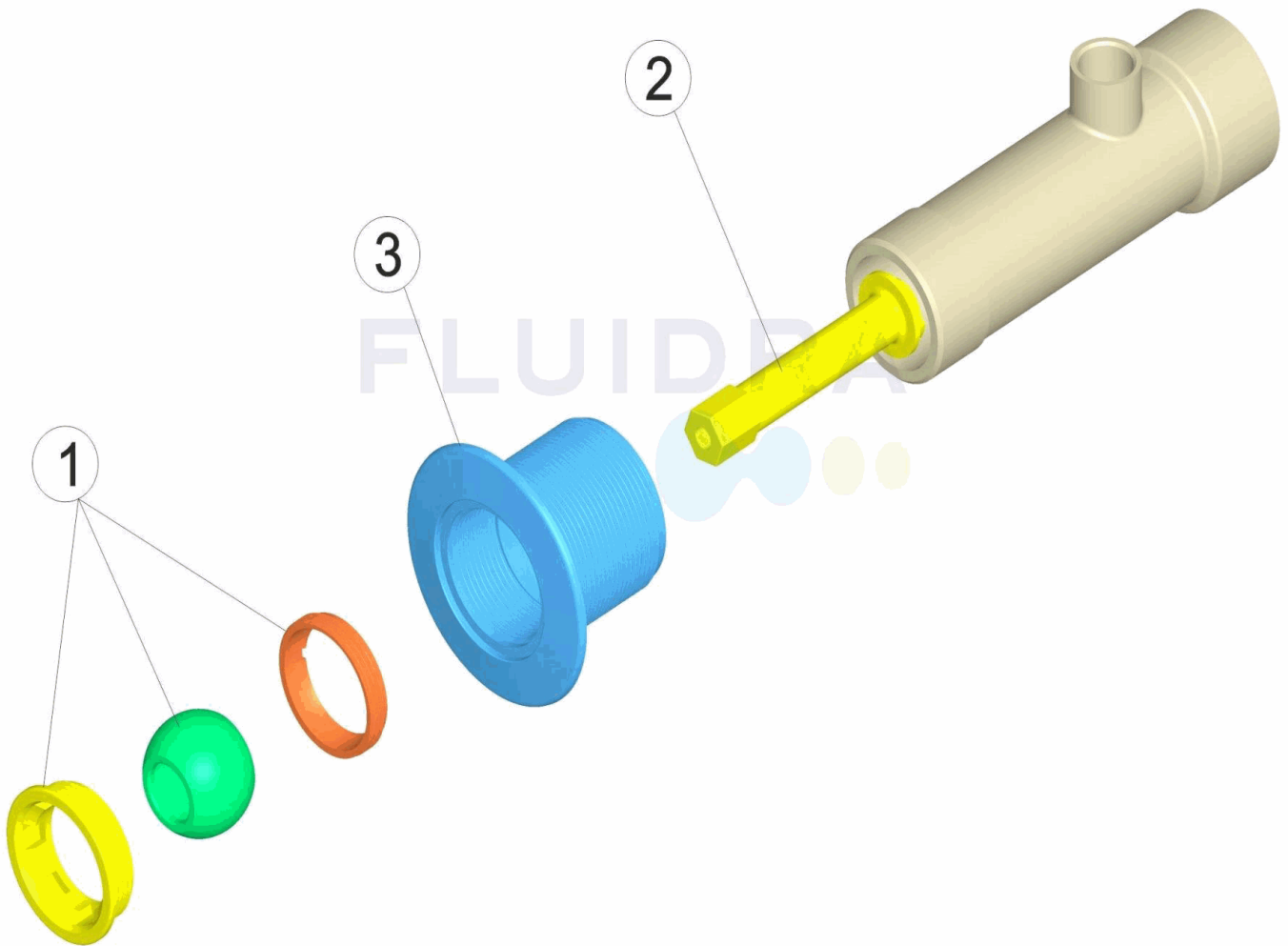
POS	CODIGO	DESCRIPCION	POS	CODIGO	DESCRIPCION
1	4402045101	BOLA D.20 + CASQUILLO + TUERCA	2	* 4402045103	VENTURI PASAMUROS L-254 M/M.
2*	4402045102	VENTURI PASAMUROS L-169 M/M.	3	27142R0001	BASE BOQUILLA

CODIGO **32113, 32370**DESCRIPCION: **BOQUILLA PAR MASAJE PIS, HORMIGON 169 - 254 M/M****OBSERVACIONES**

POS	CODIGO	OBSERVACIONES
2	4402045102	PARA: 32113
2	4402045103	PARA: 32370

CODE **32113, 32370**

DESCRIPTION: **JET MASSAGE PIS. BÉTON 169 - 254 M/M**



FRANCAIS

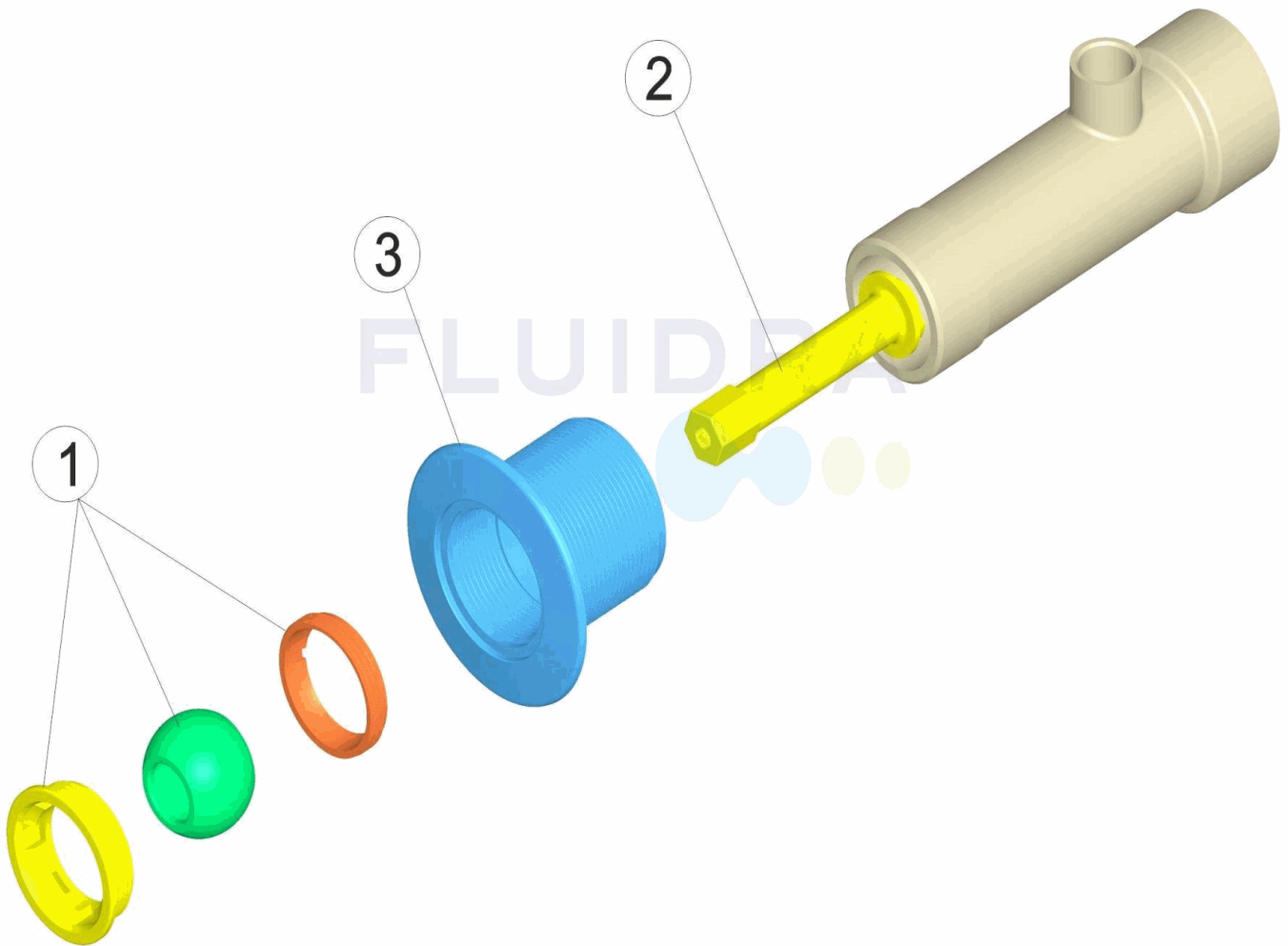
POS	CODE	DESCRIPTION	POS	CODE	DESCRIPTION
1	4402045101	ROTULE 20 + BAGUE + ECROU	2	* 4402045103	TRAVERSÉES DE PAROI VENTURI L-254 M/M.
2	* 4402045102	TRAVERSÉES DE PAROI VENTURI L-169 M/M.	3	27142R0001	CORPS BOUCHE

CODE **32113, 32370**DESCRIPTION: **JET MASSAGE PIS. BÉTON 169 - 254 M/M****OBSERVATIONS**

POS	CODE	OBSERVATIONS
2	4402045102	POUR: 32113
2	4402045103	POUR: 32370

CODE **32113, 32370**

DESCRIPTION: **MESSAGE NOZZLES, CONCRETE POOL 169 - 254 M/M**



ENGLISH

POS	CODE	DESCRIPTION	POS	CODE	DESCRIPTION
1	4402045101	EYE BALL NOZZLE 20 + BUSH + NUT	2	* 4402045103	VENTRUI WALL CONDUIT L-254 MM
2*	4402045102	VENTRUI WALL CONDUIT L-169 MM	3	27142R0001	INLET BASE

CODE **32113, 32370**

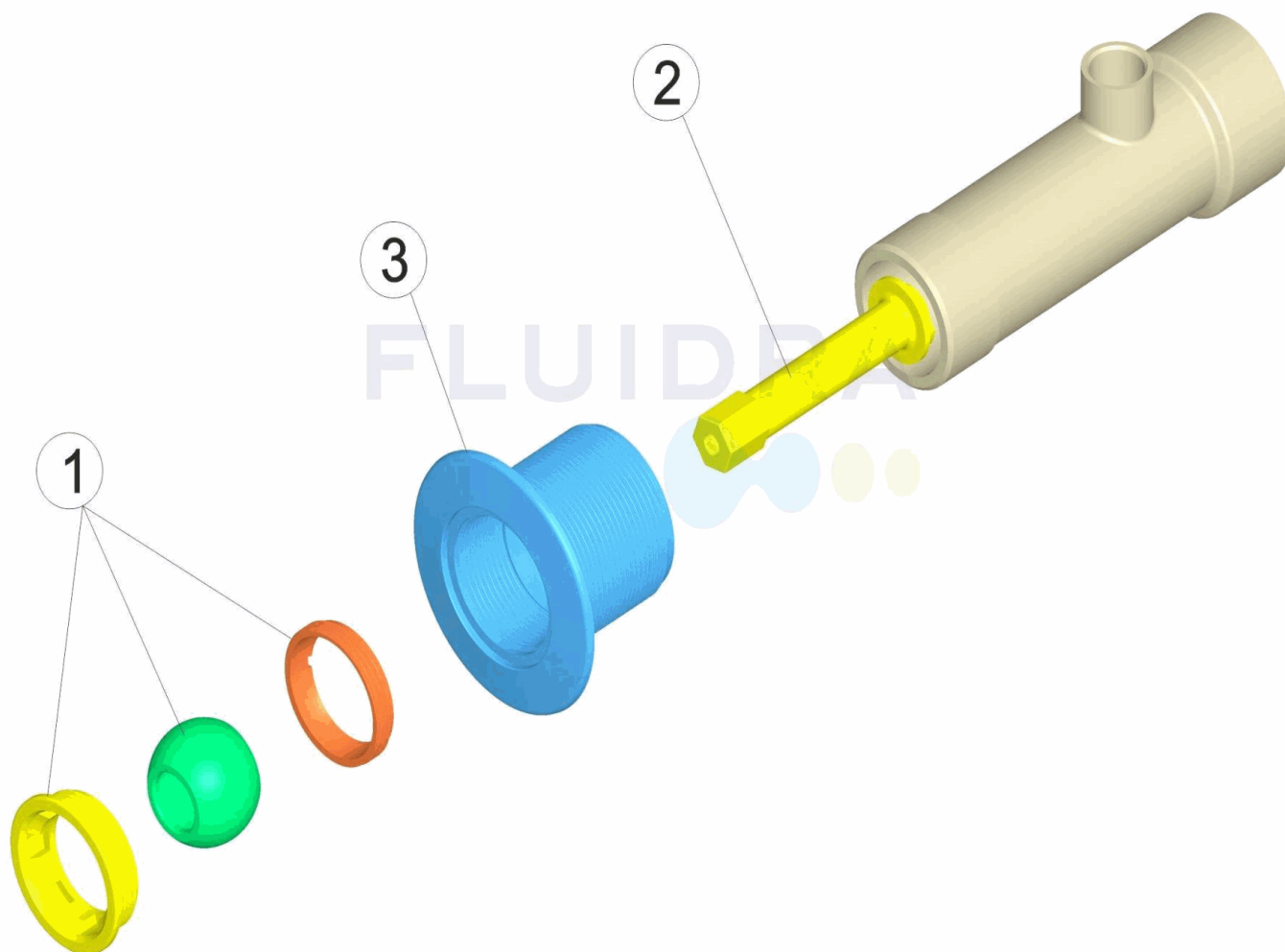
DESCRIPTION: **MESSAGE NOZZLES, CONCRETE POOL 169 - 254 M/M**

OBSERVATIONS

POS	CODE	OBSERVATIONS
2	4402045102	FOR: 32113
2	4402045103	FOR: 32370

CODICE **32113, 32370**

DESCRIZIONE: **BOCCHETTA PER MASSAGGI PISCINA CEMENTO 169 - 254 M/M**



ITALIANO

POS	CODICE	DESCRIZIONE	POS	CODICE	DESCRIZIONE
1	4402045101	SFERA 20 + RIDUZIONE + GHIERA	2	* 4402045103	PASSANTE A MURO CON SISTEMA VENTURI L.254 M
2*	4402045102	PASSANTE A MURO CON SISTEMA VENTURI L.169 M	3	27142R0001	BASE BOCCHETTA

CODICE 32113, 32370

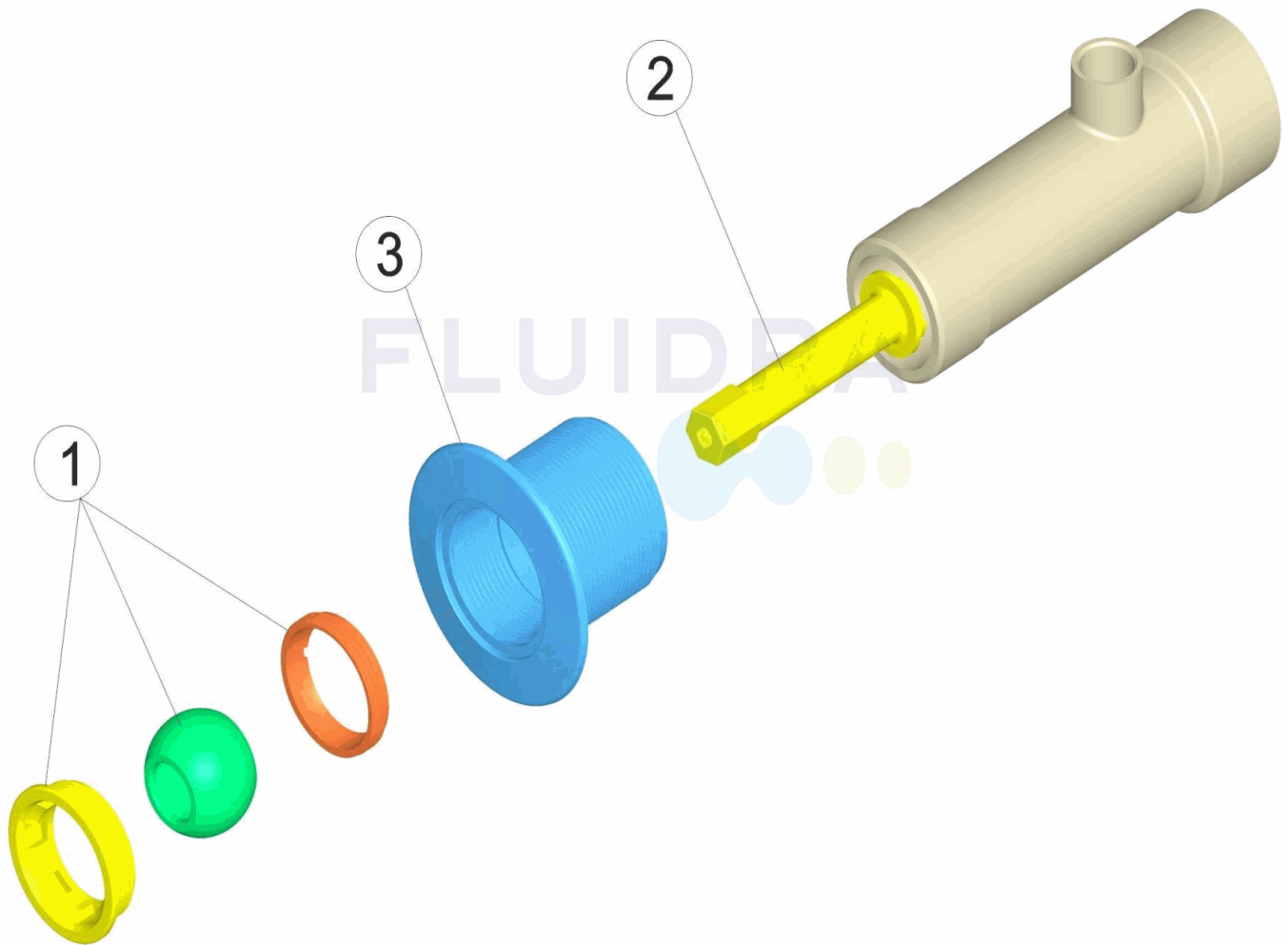
DESCRIZIONE: BOCCHETTA PER MASSAGGI PISCINA CEMENTO 169 - 254 M/M

OSSERVAZIONI

POS	CODICE	OSSERVAZIONI
2	4402045102	PER: 32113
2	4402045103	PER: 32370

CODE **32113, 32370**

BESCHREIBUNG: **MASSAGEDÜSE SCHWIMMBECKEN BETON 169 - 254 M/M.**



DEUTSCH

POS	CODE	BESCHREIBUNG	POS	CODE	BESCHREIBUNG
1	4402045101	KUGELSATZ + HÜLSE + MUTTER	2	* 4402045103	VENTURI MAUERDURCHFÜHRUNG L-254 MM
2*	4402045102	VENTURI MAUERDURCHFÜHRUNG L-169 MM	3	27142R0001	GRUNDELEMENT DÜSE

CODE **32113, 32370**

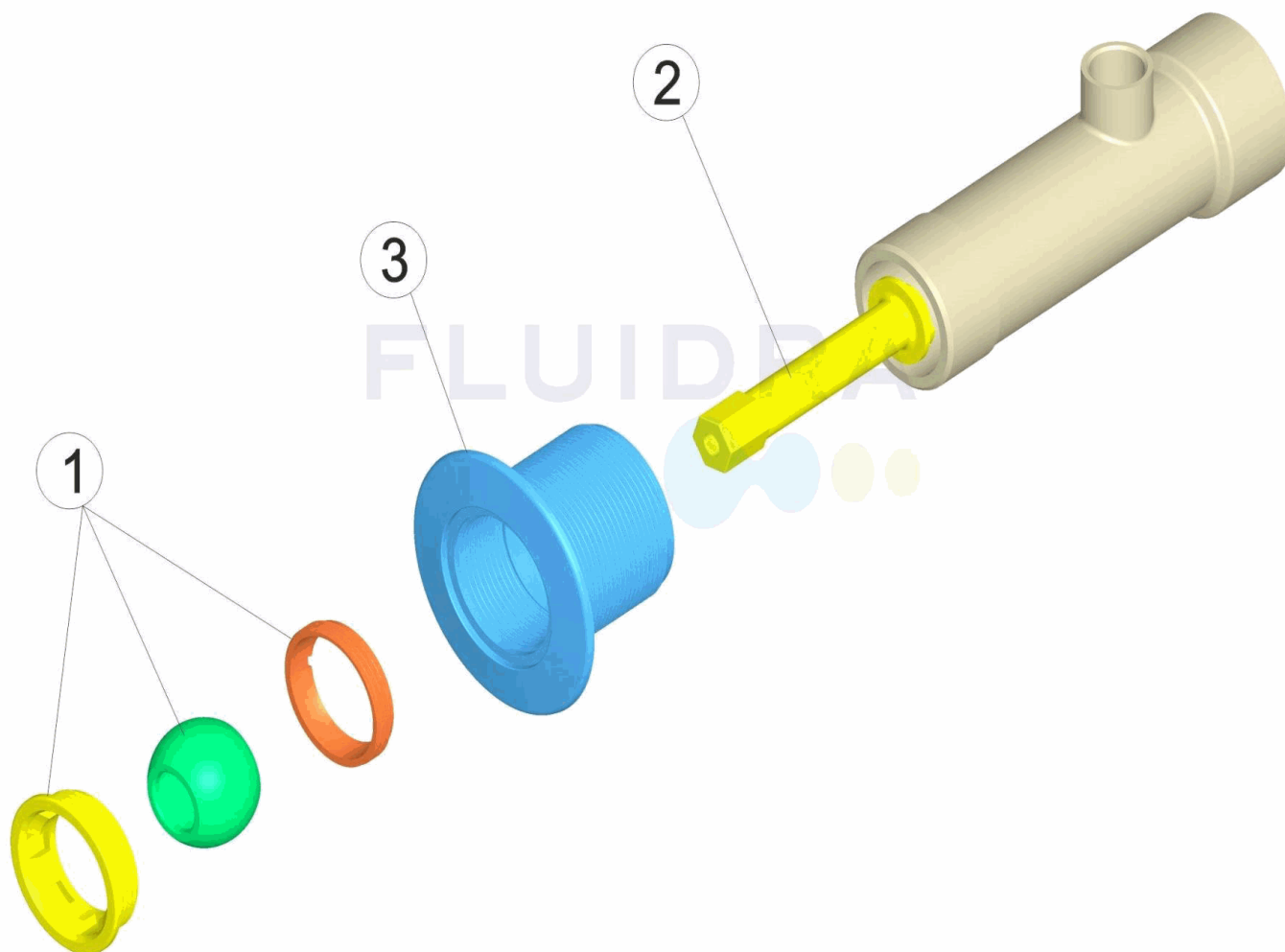
BESCHREIBUNG: **MASSAGEDÜSE SCHWIMMBECKEN BETON 169 - 254 M/M.**

HINWEISE

POS	CODE	HINWEISE
2	4402045102	FÜR: 32113
2	4402045103	FÜR: 32370

CODIGO **32113, 32370**

DESCRIÇÃO: **BOQUILHA PARA MASSAGEM PIS. BETÃO 169 - 254 M/M**



PORTUGUES

POS	CODIGO	DESCRIÇÃO	POS	CODIGO	DESCRIÇÃO
1	4402045101	BOLA 20 + CAQUILHO + PORCA	2	* 4402045103	VENTURI PASAMUROS L-254 M/M.
2*	4402045102	VENTURI PASAMUROS L-169 M/M.	3	27142R0001	BASE BOCA

CODIGO **32113, 32370**DESCRIÇÃO: **BOQUILHA PARA MASSAGEM PIS. BETÃO 169 - 254 M/M****OBSERVAÇÕES**

POS	CODIGO	OBSERVAÇÕES
2	4402045102	PARA: 32113
2	4402045103	PARA: 32370