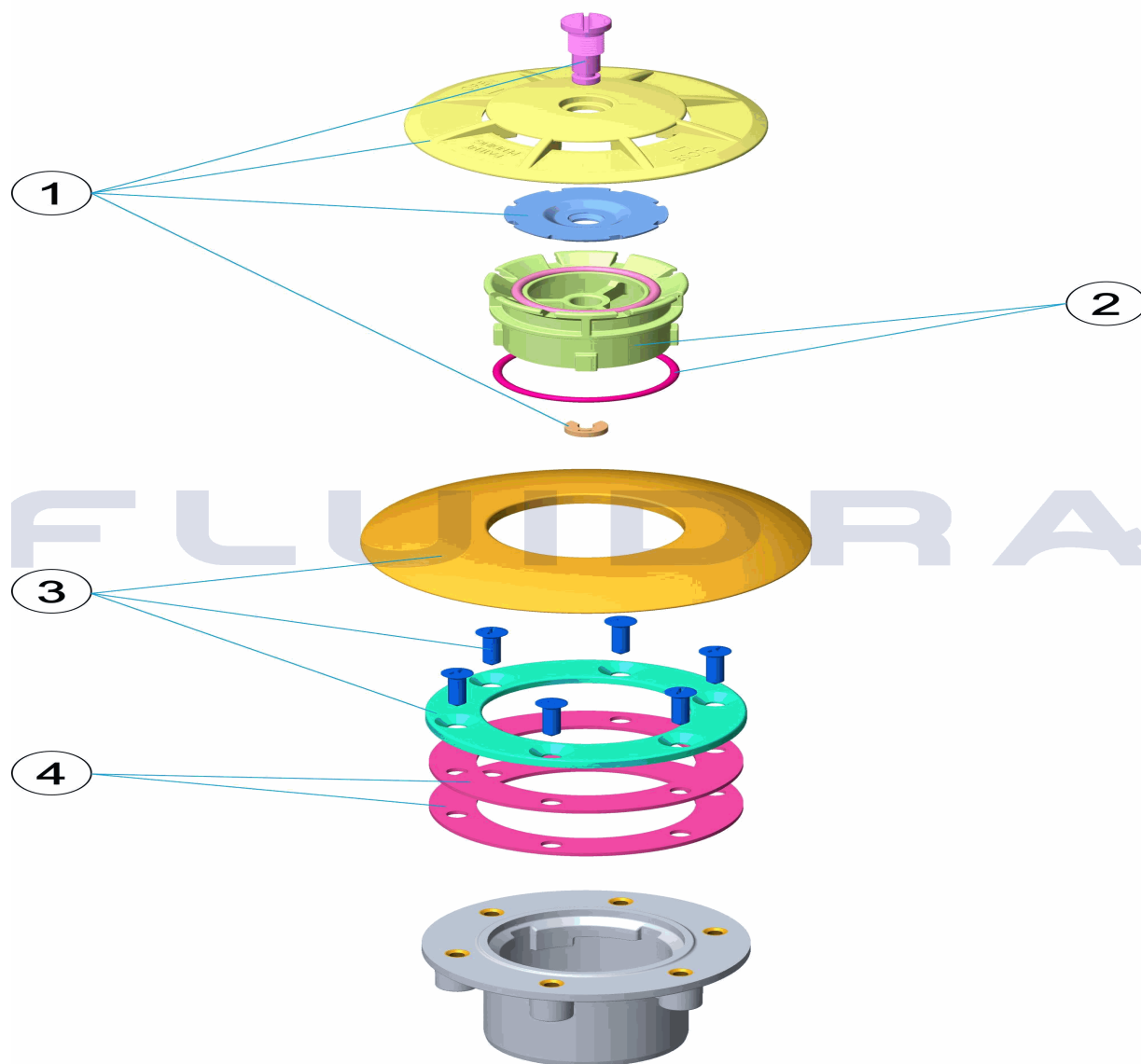


CODIGO **28502**

DESCRIPCION: **BOQUILLA MUNDIAL LINER C/INSER. B.INOX.PN-10**

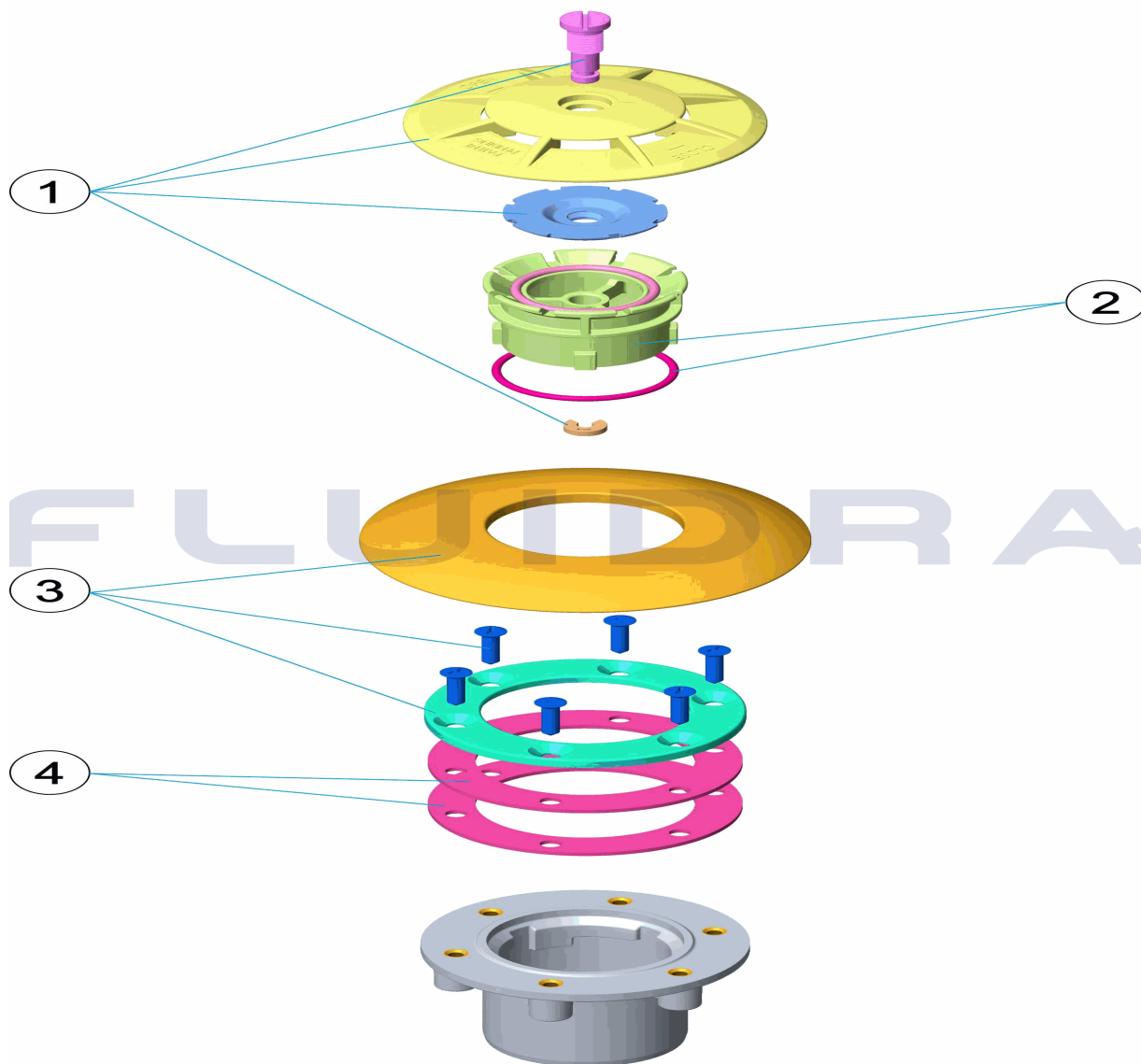


ESPAÑOL

POS	CODIGO	DESCRIPCION	CANTIDAD	POS	CODIGO	DESCRIPCION	CANTIDAD
1	4402043201	REJA Y COMPUERTA		3	4402046607	EMBELLECEDOR CON BRIDA Y TORNILLOS	
2	4402043202	CUERPO BOQUILLA OSCILANTE		4	4402044602	CJTO. JUNTAS	

CODE **28502**

DESCRIPTION: **BUSE MUNDIAL LINER AVEC INS. O.INOX.PN-10**

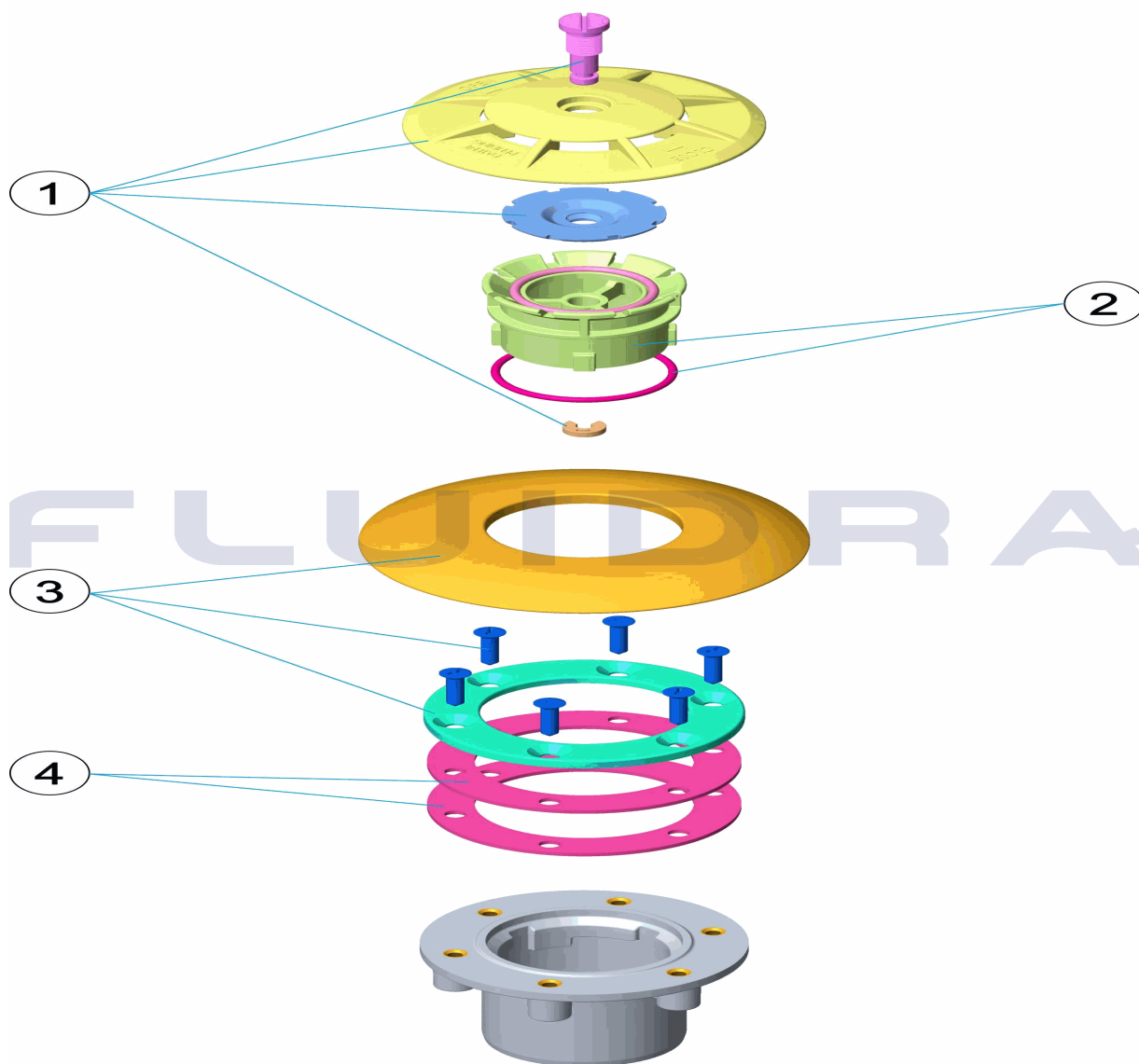


FRANCAIS

POS	CODE	DESCRIPTION	QUANTITE	POS	CODE	DESCRIPTION	QUANTITE
1	4402043201	GRILLE ET VOLET		3	4402046607	ENJOLIVEUR AVEC BRIDE ET VIS	
2	4402043202	CORPS DE BOUCHE OSCILANTE		4	4402044602	ENSEMBLE JOINTS	

CODE **28502**

DESCRIPTION: **MUNDIAL NOZZLE LINER C/INSER. B.STAINLESS STEEL. PN-10**

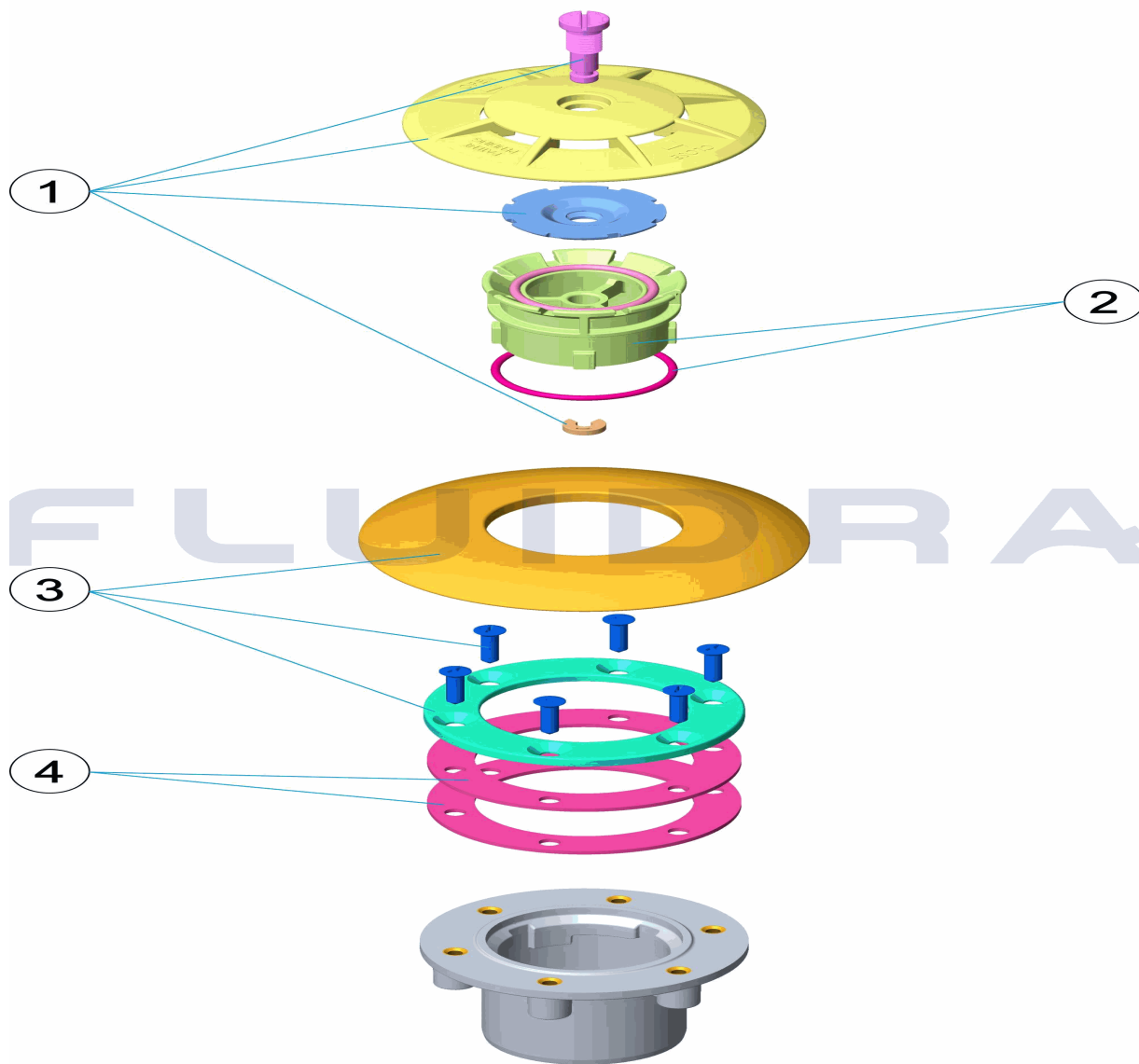


ENGLISH

POS	CODE	DESCRIPTION	QUANTITY	POS	CODE	DESCRIPTION	QUANTITY
1	4402043201	GRILLE AND FLAP		3	4402046607	TRIM WITH FLANGE AND SCREWS	
2	4402043202	REGULABLE INLET BODY		4	4402044602	GASKET ASSEMBLY	

CODICE **28502**

DESCRIZIONE: **BOCCHETTA MUNDIAL LINER C/INS. B. INOX PN-10**

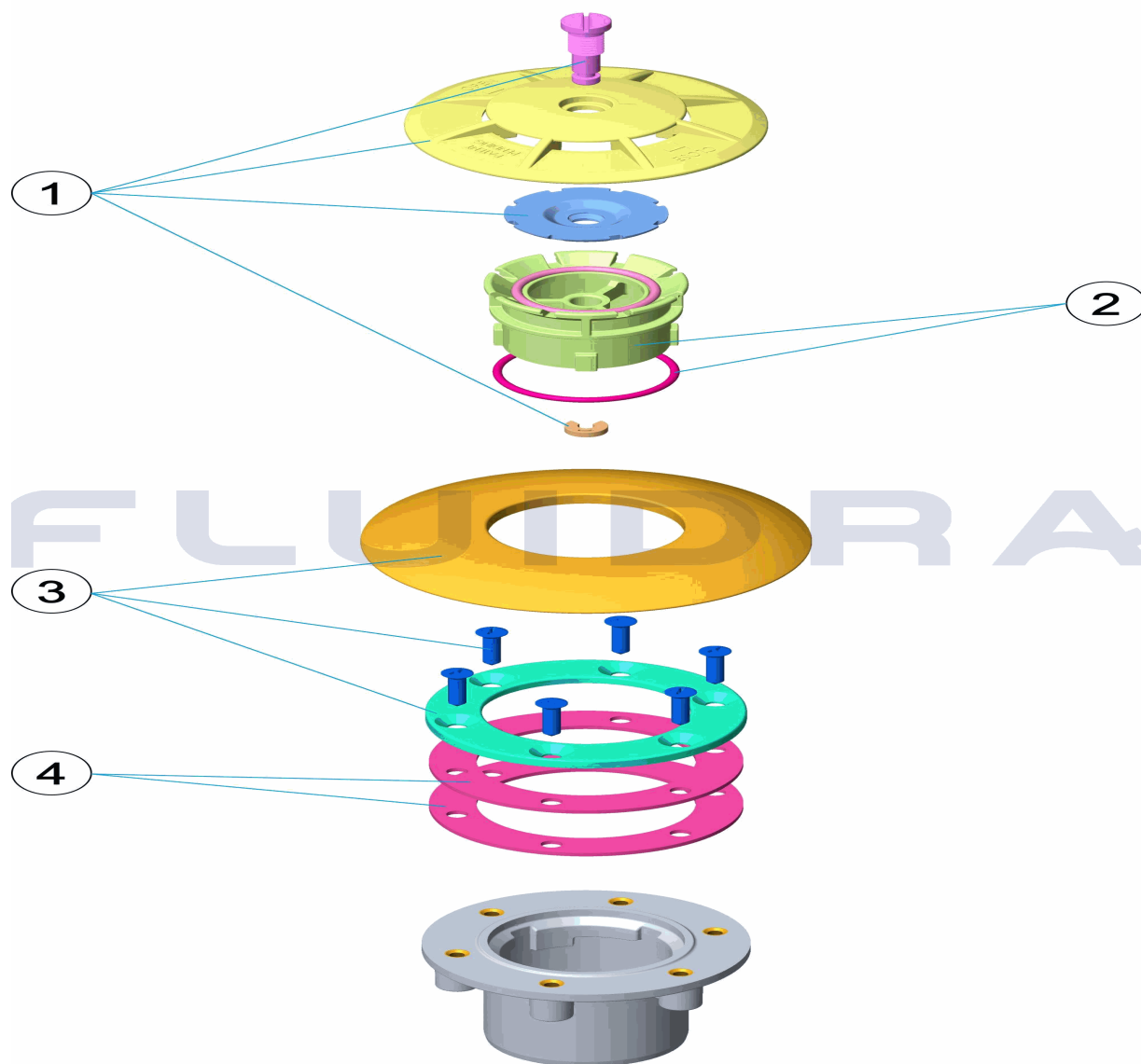


ITALIANO

POS	CODICE	DESCRIZIONE	QUANTITA'	POS	CODICE	DESCRIZIONE	QUANTITA'
1	4402043201	GRIGLIA E BATTENTE		3	4402046607	FLANGIA FINITURA CON CONTROFLANGIA	
2	4402043202	CORPO BOCCHETTA OSCILLANTE		4	4402044602	GRUPPO GUARNIZIONI	

CODE **28502**

BESCHREIBUNG: **DÜSE MUNDIAL FOLIE MIT EINSATZ FLANSCH EDELSTAHL PN-10**

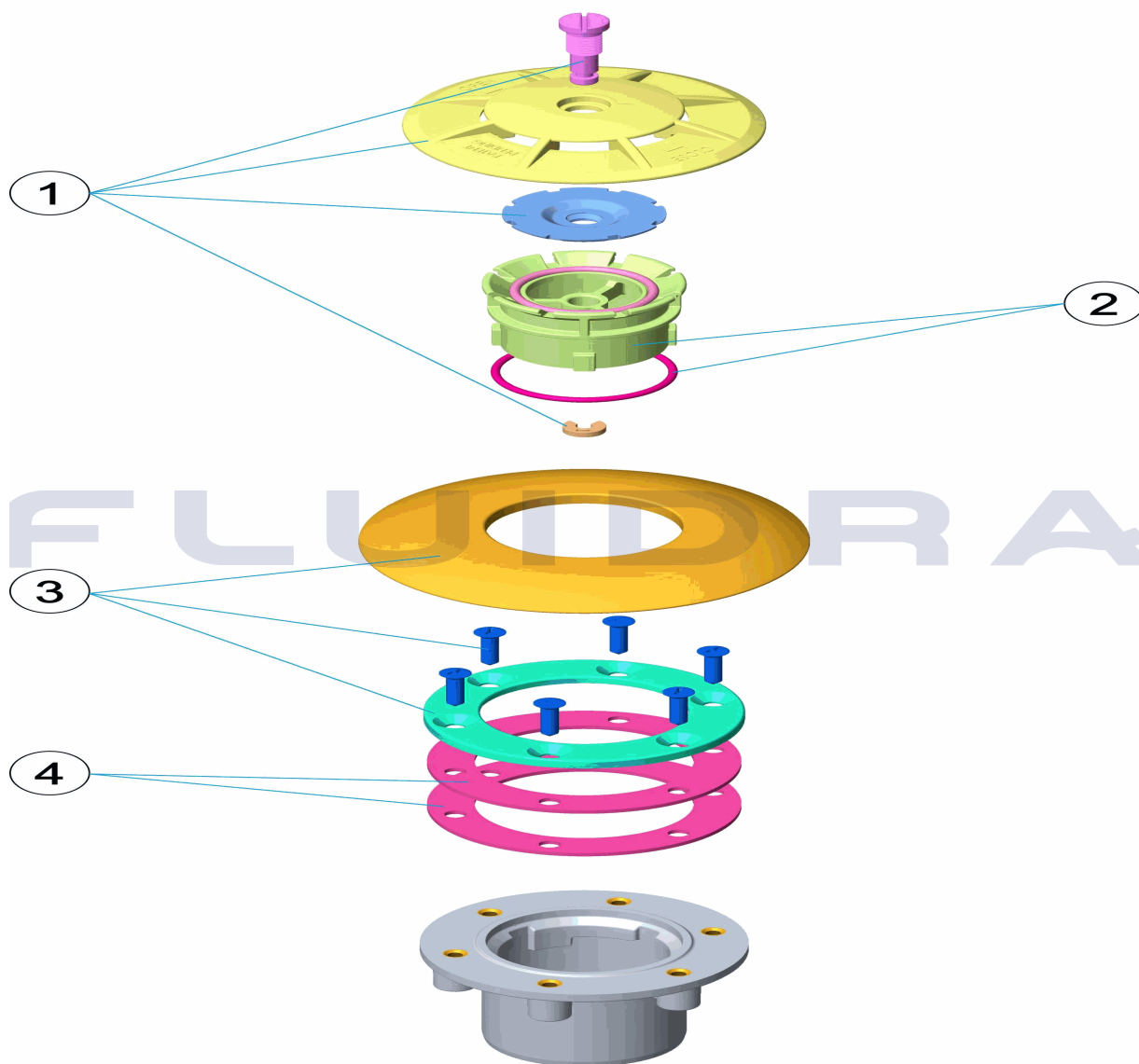


DEUTSCH

POS	CODE	BESCHREIBUNG	MENGE	POS	CODE	BESCHREIBUNG	MENGE
1	4402043201	GITTER UND KLAPPE		3	4402046607	BLENDE MIT FLANSCH UND SCHRAUBEN IN	
2	4402043202	GEHÄUSE DÜSE OSZILIEREND		4	4402044602	DICHTUNGENSATZ	

CODIGO **28502**

DESCRIÇÃO: **BOQUILHA MUNDIAL LINER C/INSER. B. INOX. PN-10**



PORTUGUES

POS	CODIGO	DESCRIÇÃO	JANTIDADE	POS	CODIGO	DESCRIÇÃO	JANTIDADE
1	4402043201	GRELHA E COMPORTA		3	4402046607	EMBELEZADOR COM BRIDA E PARAFUSOS	
2	4402043202	CORPO BOCA OSCILANTE		4	4402044602	CONJUNTO JUNTAS	